



# angela adams

## IN STOCK AREA RUG SPECIFICATIONS

---

**DESIGN:** Amma

---

**COLORWAY:** Elska

---

**CONSTRUCTION:** Hand-woven

---

**MATERIALS:** 100% New Zealand wool

---

**PILE HEIGHT:** 1/4"

---

**DENSITY:** 4 ply

---

**AVAILABLE SIZES:** 2.5'x8' | 3'x5' | 5'x8' | 8'x10' | 9'x12'

---

**ORIGIN:** Designed in Portland, Maine and responsibly handcrafted in India

---

Available to order in custom sizes, colors, constructions and materials. Contact us at **800.255.9454** to discuss custom options.

All designs copyright angela adams.



# angela adams

## IN STOCK AREA RUG SPECIFICATIONS

---

**DESIGN:** Amma

---

**COLORWAY:** Fjara

---

**CONSTRUCTION:** Hand-woven

---

**MATERIALS:** 100% New Zealand wool

---

**PILE HEIGHT:** 1/4"

---

**DENSITY:** 4 ply

---

**AVAILABLE SIZES:** 2.5'x8' | 3'x5' | 5'x8' | 8'x10' | 9'x12'

---

**ORIGIN:** Designed in Portland, Maine and responsibly handcrafted in India

---

Available to order in custom sizes, colors, constructions and materials. Contact us at **800.255.9454** to discuss custom options.

All designs copyright angela adams.





# angela adams

## IN STOCK AREA RUG SPECIFICATIONS

---

**DESIGN:** Amma

---

**COLORWAY:** Hestur

---

**CONSTRUCTION:** Hand-woven

---

**MATERIALS:** 100% New Zealand wool

---

**PILE HEIGHT:** 1/4"

---

**DENSITY:** 4 ply

---

**AVAILABLE SIZES:** 2.5'x8' | 3'x5' | 5'x8' | 8'x10' | 9'x12'

---

**ORIGIN:** Designed in Portland, Maine and responsibly handcrafted in India

---

Available to order in custom sizes, colors, constructions and materials. Contact us at **800.255.9454** to discuss custom options.

All designs copyright angela adams.

# angela adams

## IN STOCK AREA RUG SPECIFICATIONS

---

**DESIGN:** Archie

---

**COLORWAY:** Fog

---

**CONSTRUCTION:** Hand-tufted, cut and loop pile

---

**MATERIALS:** 100% New Zealand wool, cotton backing and synthetic latex adhesive

---

**PILE HEIGHT:** Loop 1/2"; Cut 3/4"

---

**DENSITY:** 2 ply, 25-30 tufts per sq in.

---

**AVAILABLE SIZES:** 3'x5' | 2.5'x8 | 5'x8' | 8'x10' | 9'x12'

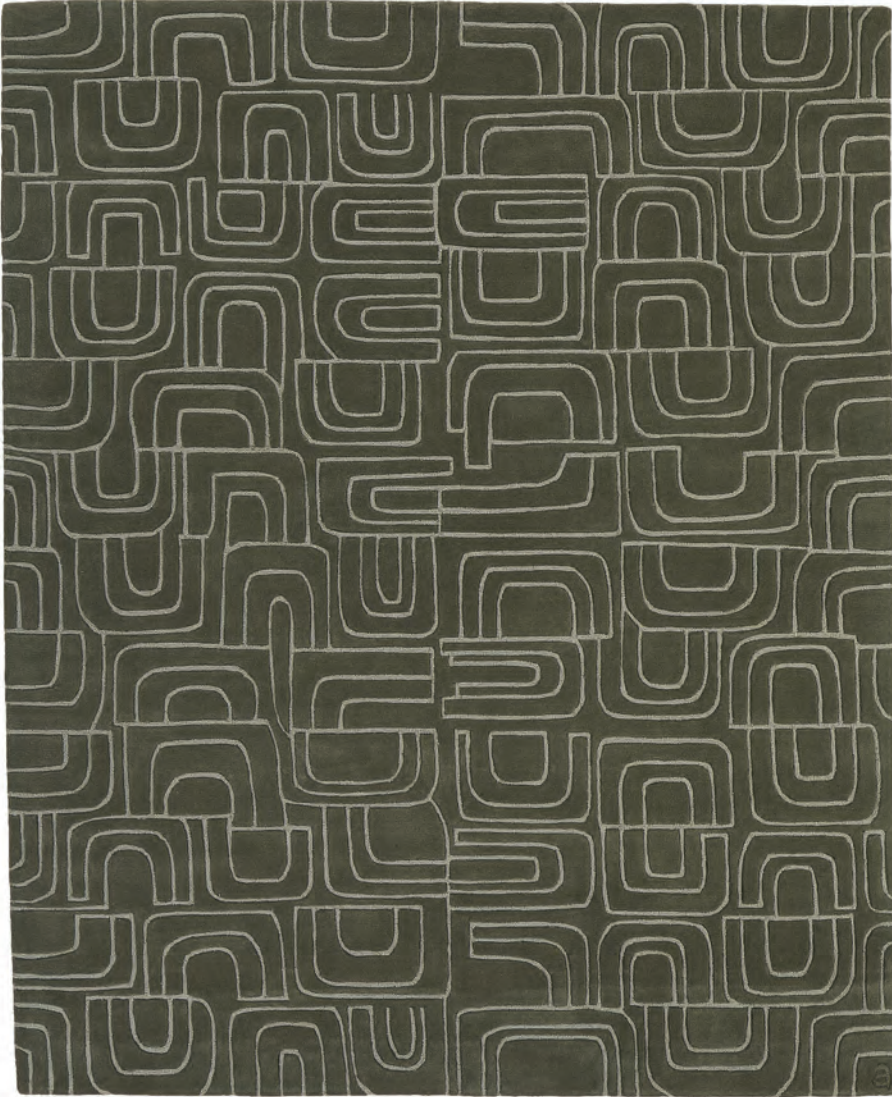
---

**ORIGIN:** Designed in Portland, Maine and responsibly handcrafted in India

---

Available to order in custom sizes, colors, constructions and materials. Contact us at **800.255.9454** to discuss custom options.

All designs copyright angela adams.





# angela adams

## IN STOCK AREA RUG SPECIFICATIONS

---

**DESIGN:** Astral

---

**COLORWAY:** Darkstar

---

**CONSTRUCTION:** Hand-tufted, cut and loop pile

---

**MATERIALS:** 100% New Zealand wool and Tencel, cotton backing and synthetic latex adhesive

---

**PILE HEIGHT:** Loop 3/8"; Cut 1/2"

---

**DENSITY:** 4 ply, 60 tufts per sq in.

---

**AVAILABLE SIZES:** 8'x10' | 9'x12'

---

**ORIGIN:** Designed in Portland, Maine and responsibly handcrafted in India

---

Available to order in custom sizes, colors, constructions and materials. Contact us at **800.255.9454** to discuss custom options.

All designs copyright angela adams.





# angela adams

## IN STOCK AREA RUG SPECIFICATIONS

---

**DESIGN:** Astral

---

**COLORWAY:** Flash

---

**CONSTRUCTION:** Hand-tufted, cut and loop pile

---

**MATERIALS:** 100% New Zealand wool and Tencel, cotton backing and synthetic latex adhesive

---

**PILE HEIGHT:** Loop 3/8"; Cut 1/2"

---

**DENSITY:** 4 ply, 60 tufts per sq in.

---

**AVAILABLE SIZES:** 8'x10' | 9'x12'

---

**ORIGIN:** Designed in Portland, Maine and responsibly handcrafted in India

---

Available to order in custom sizes, colors, constructions and materials. Contact us at **800.255.9454** to discuss custom options.

All designs copyright angela adams.





# angela adams

## IN STOCK AREA RUG SPECIFICATIONS

---

**DESIGN:** Bark

---

**COLORWAY:** Aspen

---

**CONSTRUCTION:** Hand-knotted, all cut pile

---

**MATERIALS:** 100% New Zealand wool

---

**PILE HEIGHT:** Cut 3/4"

---

**DENSITY:** 2 ply, 80 knots per sq in.

---

**AVAILABLE SIZES:** 5'x8' | 8'x10' | 9'x12'

---

**ORIGIN:** Designed in Portland, Maine and responsibly handcrafted in India

---

Available to order in custom sizes, colors, constructions and materials. Contact us at **800.255.9454** to discuss custom options.

All designs copyright angela adams.

# angela adams

## IN STOCK AREA RUG SPECIFICATIONS

---

**DESIGN:** Betty

---

**COLORWAY:** Honey

---

**CONSTRUCTION:** Hand-tufted, cut and loop pile

---

**MATERIALS:** 100% New Zealand wool, cotton backing and synthetic latex adhesive

---

**PILE HEIGHT:** Loop 1/2"; Cut 3/4"

---

**DENSITY:** 2 ply, 25-30 tufts per sq in.

---

**AVAILABLE SIZES:** 2.5'x8' | 5'x8' | 8'x10' | 9'x12'

---

**ORIGIN:** Designed in Portland, Maine and responsibly handcrafted in India

---

Available to order in custom sizes, colors, constructions and materials. Contact us at **800.255.9454** to discuss custom options.

All designs copyright angela adams.





# angela adams

## IN STOCK AREA RUG SPECIFICATIONS

---

**DESIGN:** Betty

---

**COLORWAY:** Sprout

---

**CONSTRUCTION:** Hand-tufted, cut and loop pile

---

**MATERIALS:** 100% New Zealand wool, cotton backing and synthetic latex adhesive

---

**PILE HEIGHT:** Loop 1/2"; Cut 3/4"

---

**DENSITY:** 2 ply, 25-30 tufts per sq in.

---

**AVAILABLE SIZES:** 2.5'x8' | 5'x8' | 8'x10' | 9'x12'

---

**ORIGIN:** Designed in Portland, Maine and responsibly handcrafted in India

---

Available to order in custom sizes, colors, constructions and materials. Contact us at **800.255.9454** to discuss custom options.

All designs copyright angela adams.





# angela adams

## IN STOCK AREA RUG SPECIFICATIONS

---

**DESIGN:** Borealis

---

**COLORWAY:** Glow

---

**CONSTRUCTION:** Hand-tufted, all cut pile

---

**MATERIALS:** 100% New Zealand wool, cotton backing and synthetic latex adhesive

---

**PILE HEIGHT:** Cut 3/4"

---

**DENSITY:** 2 ply, 25-30 tufts per sq in.

---

**AVAILABLE SIZES:** 3'x5' | 5'x8' | 8'x10' | 9'x12'

---

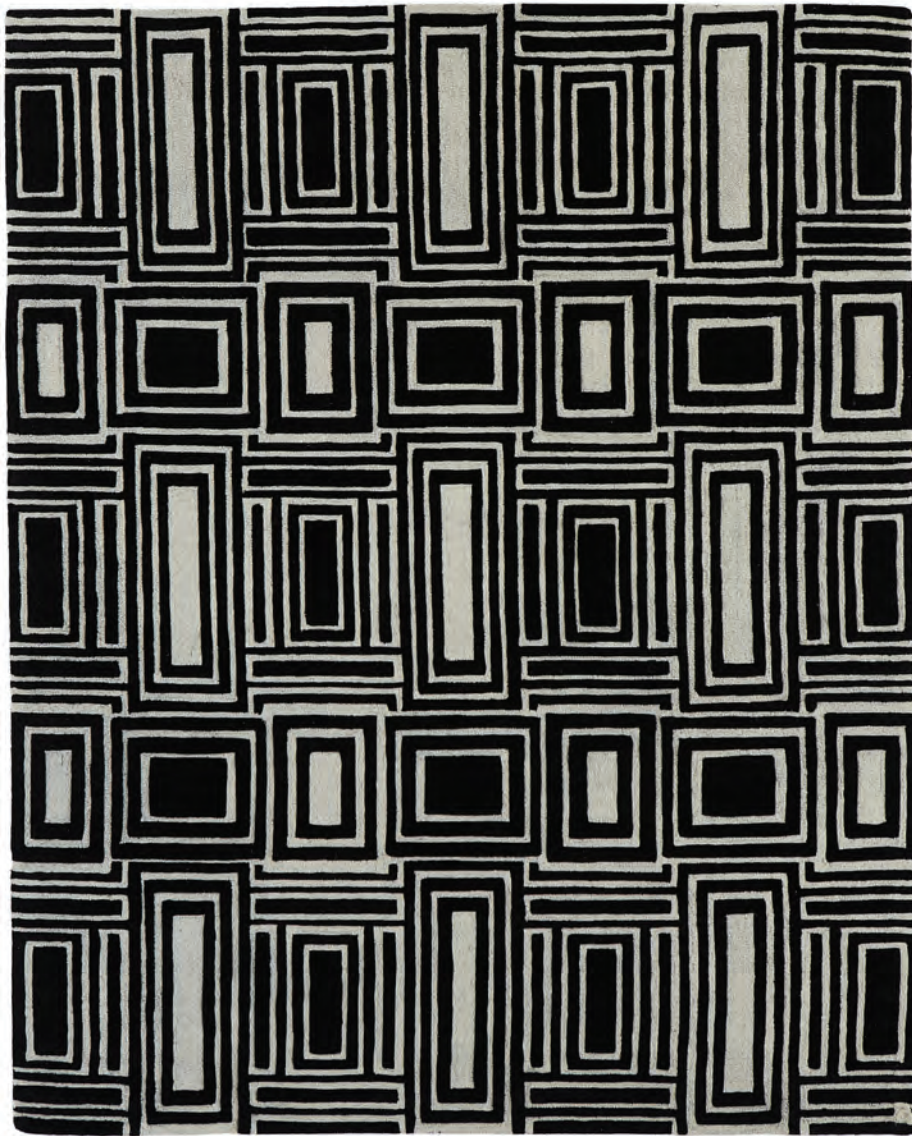
**ORIGIN:** Designed in Portland, Maine and responsibly handcrafted in India

---

Available to order in custom sizes, colors, constructions and materials. Contact us at **800.255.9454** to discuss custom options.

All designs copyright angela adams.





# angela adams

## IN STOCK AREA RUG SPECIFICATIONS

---

**DESIGN:** Eli

---

**COLORWAY:** B+W

---

**CONSTRUCTION:** Hand-tufted, cut and loop pile

---

**MATERIALS:** 100% New Zealand wool, cotton backing and synthetic latex adhesive

---

**PILE HEIGHT:** Loop 1/2"; Cut 3/4"

---

**DENSITY:** 2 ply, 25-30 tufts per sq in.

---

**AVAILABLE SIZES:** 2.5'x8' | 5'x8' | 8'x10' | 9'x12'

---

**ORIGIN:** Designed in Portland, Maine and responsibly handcrafted in India

---

Available to order in custom sizes, colors, constructions and materials. Contact us at **800.255.9454** to discuss custom options.

All designs copyright angela adams.

# angela adams

## IN STOCK AREA RUG SPECIFICATIONS

---

**DESIGN:** Fog Bank

---

**COLORWAY:** Natural

---

**CONSTRUCTION:** Hand-tufted, all cut pile

---

**MATERIALS:** 100% New Zealand wool, cotton backing and synthetic latex adhesive

---

**PILE HEIGHT:** Cut 3/4" - 1"

---

**DENSITY:** 2 ply, 25-30 tufts per sq in.

---

**AVAILABLE SIZES:** 5'x8' | 8'x10' | 9'x12'

---

**ORIGIN:** Designed in Portland, Maine and responsibly handcrafted in India

---

Available to order in custom sizes, colors, constructions and materials. Contact us at **800.255.9454** to discuss custom options.

All designs copyright angela adams.







# angela adams

## IN STOCK AREA RUG SPECIFICATIONS

---

**DESIGN:** Galactic

---

**COLORWAY:** Celestial

---

**CONSTRUCTION:** Hand-tufted, cut and loop pile

---

**MATERIALS:** 100% New Zealand wool, cotton backing and synthetic latex adhesive

---

**PILE HEIGHT:** Loop 8mm (5/16"); Cut 10mm (3/8").  
Maximum thickness 1/2" from floor. Edge to crush to 1/4".

---

**DENSITY:** 4 ply, 60 tufts per sq in.

---

**AVAILABLE SIZES:** 3'x10' | 8'x10' | 9'x12'

---

**ORIGIN:** Designed in Portland, Maine and responsibly handcrafted in India

---

Available to order in custom sizes, colors, constructions and materials. Contact us at **800.255.9454** to discuss custom options.

All designs copyright angela adams.



# angela adams

## IN STOCK AREA RUG SPECIFICATIONS

---

**DESIGN:** Galactic

---

**COLORWAY:** Solar

---

**CONSTRUCTION:** Hand-tufted, cut and loop pile

---

**MATERIALS:** 100% New Zealand wool, cotton backing and synthetic latex adhesive

---

**PILE HEIGHT:** Loop 8mm (5/16"); Cut 10mm (3/8").  
Maximum thickness 1/2" from floor. Edge to crush to 1/4".

---

**DENSITY:** 4 ply, 60 tufts per sq in.

---

**AVAILABLE SIZES:** 3'x10' | 8'x10' | 9'x12'

---

**ORIGIN:** Designed in Portland, Maine and responsibly handcrafted in India

---

Available to order in custom sizes, colors, constructions and materials. Contact us at **800.255.9454** to discuss custom options.

All designs copyright angela adams.





# angela adams

## IN STOCK AREA RUG SPECIFICATIONS

---

**DESIGN:** Garbo

---

**COLORWAY:** Amber

---

**CONSTRUCTION:** Hand-tufted, cut and loop pile

---

**MATERIALS:** 100% New Zealand wool, cotton backing and synthetic latex adhesive

---

**PILE HEIGHT:** Loop 8mm (5/16"); Cut 10mm (3/8").  
Maximum thickness 1/2" from floor. Edge to crush to 1/4".

---

**DENSITY:** 4 ply, 60 tufts per sq in.

---

**AVAILABLE SIZES:** 5'x8' | 8'x10' | 9'x12'

---

**ORIGIN:** Designed in Portland, Maine and responsibly handcrafted in India

---

Available to order in custom sizes, colors, constructions and materials. Contact us at **800.255.9454** to discuss custom options.

All designs copyright angela adams.

# angela adams

## IN STOCK AREA RUG SPECIFICATIONS

---

**DESIGN:** Garbo

---

**COLORWAY:** Sapphire

---

**CONSTRUCTION:** Hand-tufted, cut and loop pile

---

**MATERIALS:** 100% New Zealand wool, cotton backing and synthetic latex adhesive

---

**PILE HEIGHT:** Loop 8mm (5/16"); Cut 10mm (3/8").  
Maximum thickness 1/2" from floor. Edge to crush to 1/4".

---

**DENSITY:** 4 ply, 60 tufts per sq in.

---

**AVAILABLE SIZES:** 5'x8' | 8'x10' | 9'x12'

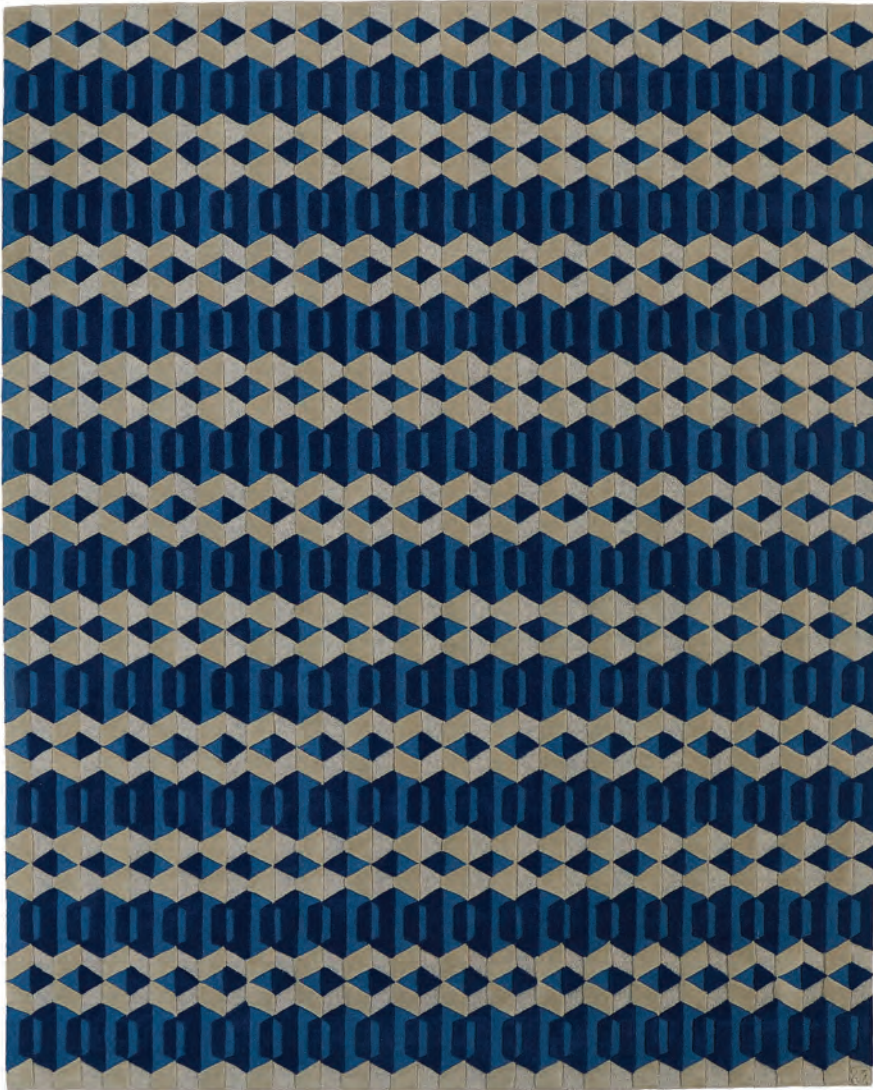
---

**ORIGIN:** Designed in Portland, Maine and responsibly handcrafted in India

---

Available to order in custom sizes, colors, constructions and materials. Contact us at **800.255.9454** to discuss custom options.

All designs copyright angela adams.





# angela adams

## IN STOCK AREA RUG SPECIFICATIONS

---

**DESIGN:** Garden

---

**CONSTRUCTION:** Hand-tufted, cut and loop pile

---

**MATERIALS:** 100% New Zealand wool, cotton backing and synthetic latex adhesive

---

**PILE HEIGHT:** Loop 3/8"; Cut 1/2" - 3/4"

---

**DENSITY:** 4 ply, 60 tufts per sq in.

---

**AVAILABLE SIZES:** 3'x8' | 8'R | 9'x11'

---

**ORIGIN:** Designed in Portland, Maine and responsibly handcrafted in India

---

Available to order in custom sizes, colors, constructions and materials. Contact us at **800.255.9454** to discuss custom options.

All designs copyright angela adams.



# angela adams

## IN STOCK AREA RUG SPECIFICATIONS

---

**DESIGN:** Glacier

---

**COLORWAY:** Blue

---

**CONSTRUCTION:** Hand-knotted, all cut pile

---

**MATERIALS:** 100% New Zealand wool

---

**PILE HEIGHT:** Cut 1/2"

---

**DENSITY:** 2 ply, 80 knots per sq in.

---

**AVAILABLE SIZES:** 5'x8' | 8'x10' | 9'x12'

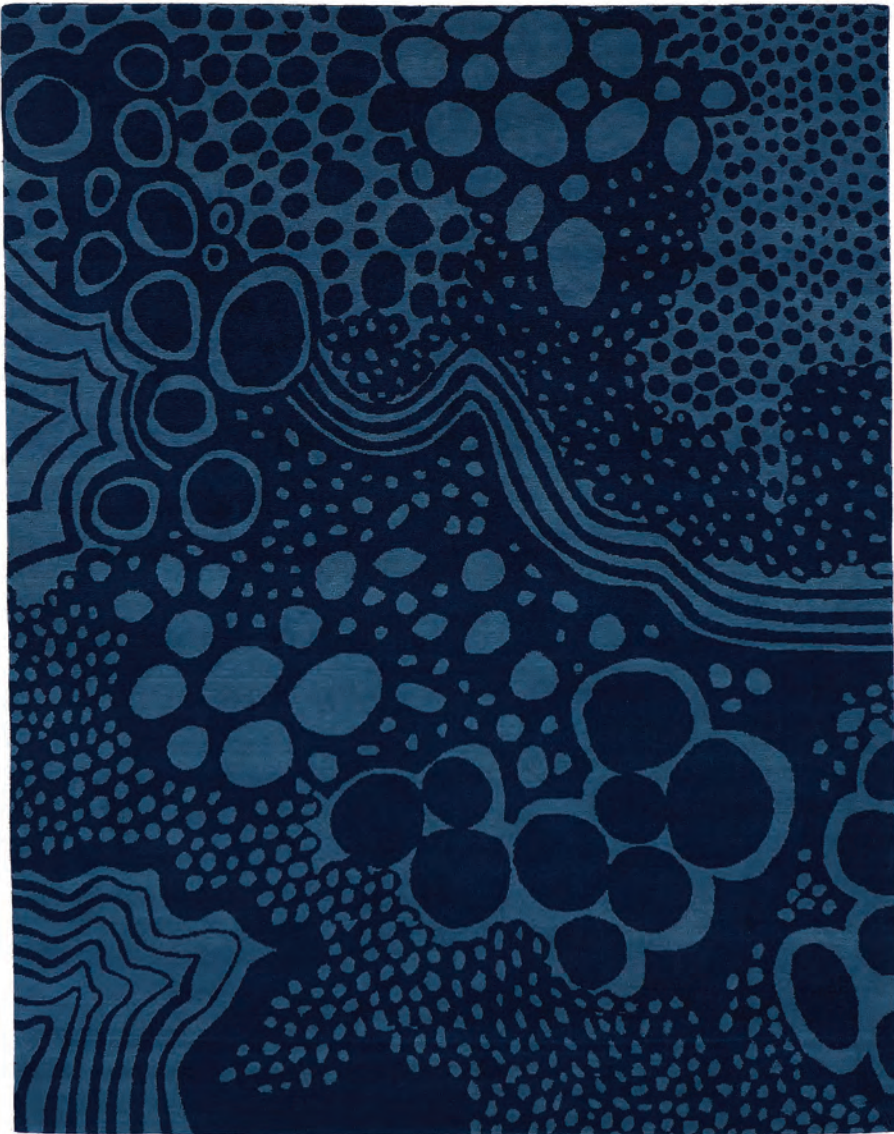
---

**ORIGIN:** Designed in Portland, Maine and responsibly handcrafted in India

---

Available to order in custom sizes, colors, constructions and materials. Contact us at **800.255.9454** to discuss custom options.

All designs copyright angela adams.





# angela adams

## IN STOCK AREA RUG SPECIFICATIONS

---

**DESIGN:** Glacier

---

**COLORWAY:** Sunny

---

**CONSTRUCTION:** Hand-knotted, all cut pile

---

**MATERIALS:** 100% New Zealand wool

---

**PILE HEIGHT:** Cut 1/2"

---

**DENSITY:** 2 ply, 80 knots per sq in.

---

**AVAILABLE SIZES:** 5'x8' | 8'x10' | 9'x12'

---

**ORIGIN:** Designed in Portland, Maine and responsibly handcrafted in India

---

Available to order in custom sizes, colors, constructions and materials. Contact us at **800.255.9454** to discuss custom options.

All designs copyright angela adams.





# angela adams

## IN STOCK AREA RUG SPECIFICATIONS

---

**DESIGN:** Grace

---

**COLORWAY:** Pool

---

**CONSTRUCTION:** Hand-tufted, all cut pile

---

**MATERIALS:** 100% New Zealand wool, cotton backing and synthetic latex adhesive

---

**PILE HEIGHT:** Cut 3/4"

---

**DENSITY:** 2 ply, 25-30 tufts per sq in.

---

**AVAILABLE SIZES:** 3'x5' | 2.5'x8' | 5'x8' | 8'x10' | 9'x12'

---

**ORIGIN:** Designed in Portland, Maine and responsibly handcrafted in India

---

Available to order in custom sizes, colors, constructions and materials. Contact us at **800.255.9454** to discuss custom options.

All designs copyright angela adams.



# angela adams

## IN STOCK AREA RUG SPECIFICATIONS

---

**DESIGN:** Haven

---

**COLORWAY:** Tidal

---

**CONSTRUCTION:** Hand-tufted, cut and loop pile

---

**MATERIALS:** 100% New Zealand wool, cotton backing and synthetic latex adhesive

---

**PILE HEIGHT:** Loop 1/2"; Cut 3/4" - 1"

---

**DENSITY:** 2 ply, 25-30 tufts per sq in.

---

**AVAILABLE SIZES:** 3'x5' | 2.5'x8' | 5'x8' | 8'x10' | 9'x12'

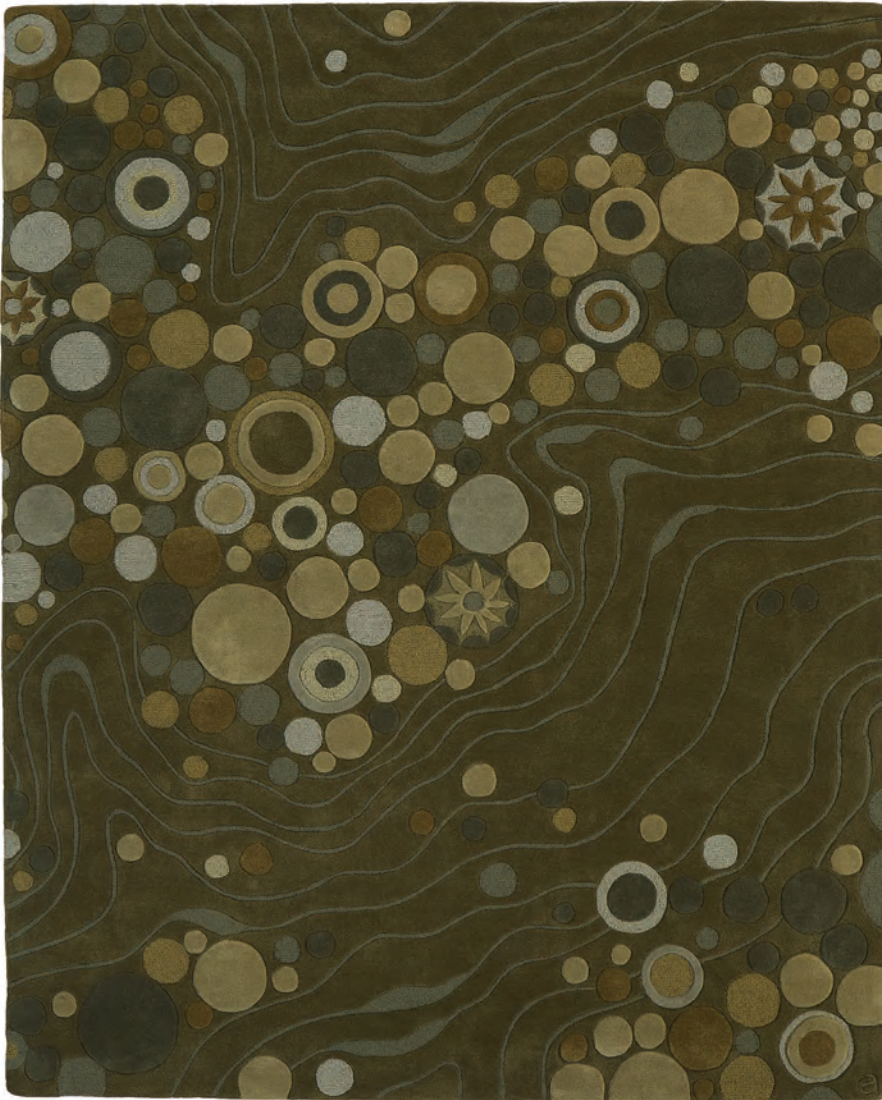
---

**ORIGIN:** Designed in Portland, Maine and responsibly handcrafted in India

---

Available to order in custom sizes, colors, constructions and materials. Contact us at **800.255.9454** to discuss custom options.

All designs copyright angela adams.





# angela adams

## IN STOCK AREA RUG SPECIFICATIONS

---

**DESIGN:** Infinity

---

**COLORWAY:** Daylight

---

**CONSTRUCTION:** Hand-tufted, all cut pile

---

**MATERIALS:** 100% New Zealand wool, cotton backing and synthetic latex adhesive

---

**PILE HEIGHT:** Cut 1"

---

**DENSITY:** 2 ply, 25-30 tufts per sq in.

---

**AVAILABLE SIZES:** 8'x10' | 9'x12'

---

**ORIGIN:** Designed in Portland, Maine and responsibly handcrafted in India

---

Available to order in custom sizes, colors, constructions and materials. Contact us at **800.255.9454** to discuss custom options.

All designs copyright angela adams.





# angela adams

## IN STOCK AREA RUG SPECIFICATIONS

---

**DESIGN:** Infinity

---

**COLORWAY:** Moonlight

---

**CONSTRUCTION:** Hand-tufted, all cut pile

---

**MATERIALS:** 100% New Zealand wool, cotton backing and synthetic latex adhesive

---

**PILE HEIGHT:** Cut 1"

---

**DENSITY:** 2 ply, 25-30 tufts per sq in.

---

**AVAILABLE SIZES:** 8'x10' | 9'x12'

---

**ORIGIN:** Designed in Portland, Maine and responsibly handcrafted in India

---

Available to order in custom sizes, colors, constructions and materials. Contact us at **800.255.9454** to discuss custom options.

All designs copyright angela adams.

# angela adams

## IN STOCK AREA RUG SPECIFICATIONS

---

**DESIGN:** June

---

**COLORWAY:** Morning Dew

---

**CONSTRUCTION:** Hand-tufted, cut and loop pile

---

**MATERIALS:** 100% New Zealand wool, cotton backing and synthetic latex adhesive

---

**PILE HEIGHT:** Loop 8mm (5/16"); Cut 10mm (3/8").  
Maximum thickness 1/2" from floor. Edge to crush to 1/4".

---

**DENSITY:** 4 ply, 60 tufts per sq in.

---

**AVAILABLE SIZES:** 5'x8' | 8'x10' | 9'x12'

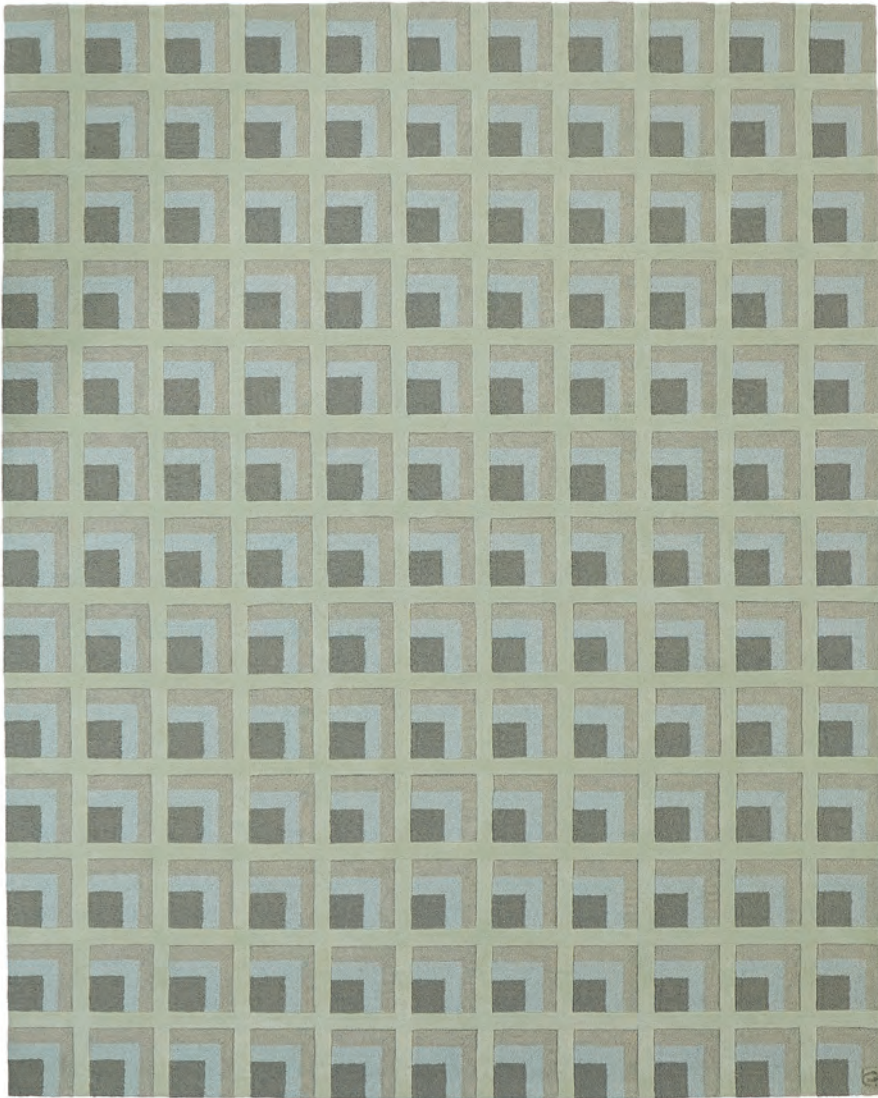
---

**ORIGIN:** Designed in Portland, Maine and responsibly handcrafted in India

---

Available to order in custom sizes, colors, constructions and materials. Contact us at **800.255.9454** to discuss custom options.

All designs copyright angela adams.





# angela adams

## IN STOCK AREA RUG SPECIFICATIONS

---

**DESIGN:** June

---

**COLORWAY:** Rosebud

---

**CONSTRUCTION:** Hand-tufted, cut and loop pile

---

**MATERIALS:** 100% New Zealand wool, cotton backing and synthetic latex adhesive

---

**PILE HEIGHT:** Loop 8mm (5/16"); Cut 10mm (3/8").  
Maximum thickness 1/2" from floor. Edge to crush to 1/4".

---

**DENSITY:** 4 ply, 60 tufts per sq in.

---

**AVAILABLE SIZES:** 5'x8' | 8'x10' | 9'x12'

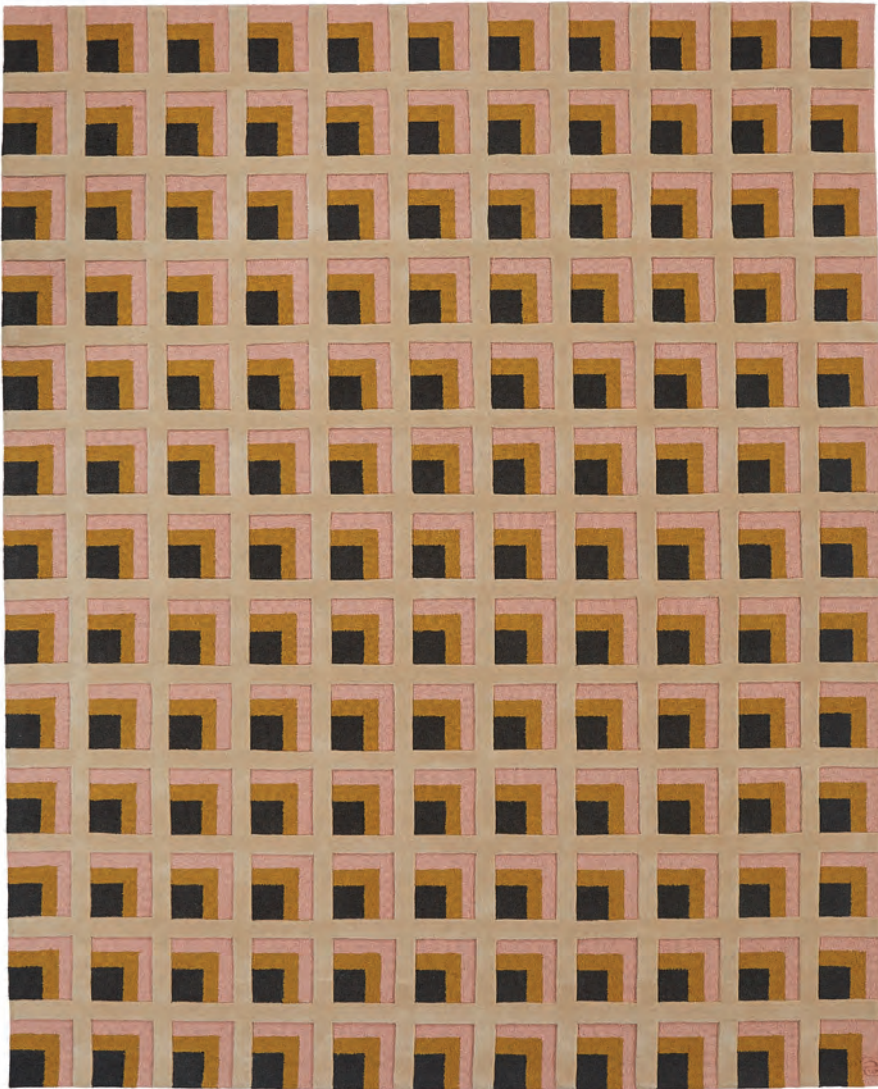
---

**ORIGIN:** Designed in Portland, Maine and responsibly handcrafted in India

---

Available to order in custom sizes, colors, constructions and materials. Contact us at **800.255.9454** to discuss custom options.

All designs copyright angela adams.





# angela adams

## IN STOCK AREA RUG SPECIFICATIONS

---

**DESIGN:** Lunar Orbit

---

**COLORWAY:** Night Sky

---

**CONSTRUCTION:** Hand-tufted, cut and loop pile

---

**MATERIALS:** 100% New Zealand wool, cotton backing and synthetic latex adhesive

---

**PILE HEIGHT:** Loop 8mm (5/16"); Cut 10mm (3/8").  
Maximum thickness 1/2" from floor. Edge to crush to 1/4".

---

**DENSITY:** 4 ply, 60 tufts per sq in.

---

**AVAILABLE SIZES:** 8'x10' | 9'x12'

---

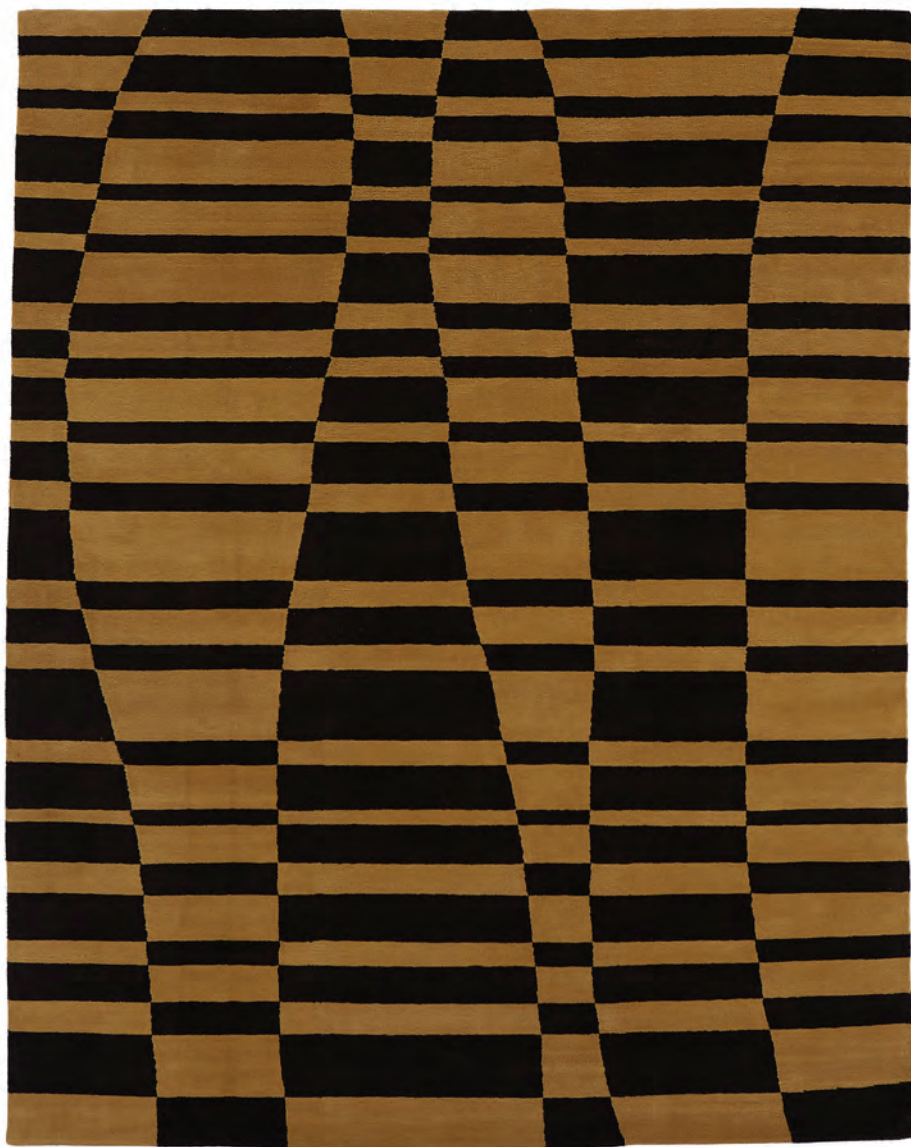
**ORIGIN:** Designed in Portland, Maine and responsibly handcrafted in India

---

Available to order in custom sizes, colors, constructions and materials. Contact us at **800.255.9454** to discuss custom options.

All designs copyright angela adams.





# angela adams

## IN STOCK AREA RUG SPECIFICATIONS

---

**DESIGN:** Mack

---

**COLORWAY:** Amber

---

**CONSTRUCTION:** Hand-knotted, all cut pile

---

**MATERIALS:** 100% New Zealand wool

---

**PILE HEIGHT:** Cut 1/2"

---

**DENSITY:** 2 ply, 80 knots per sq in.

---

**AVAILABLE SIZES:** 8'x10' | 9'x12'

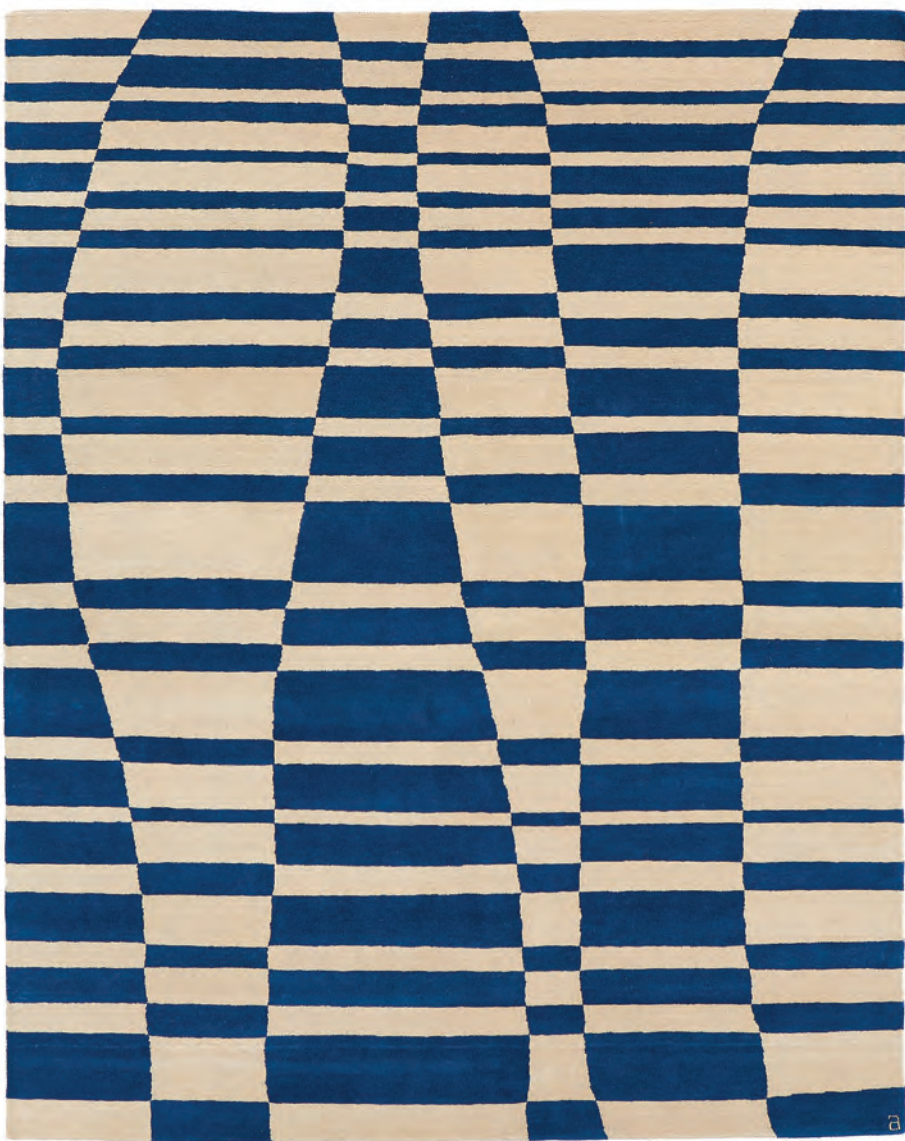
---

**ORIGIN:** Designed in Portland, Maine and responsibly handcrafted in India

---

Available to order in custom sizes, colors, constructions and materials. Contact us at **800.255.9454** to discuss custom options.

All designs copyright angela adams.



# angela adams

## IN STOCK AREA RUG SPECIFICATIONS

---

**DESIGN:** Mack

---

**COLORWAY:** Azure

---

**CONSTRUCTION:** Hand-knotted, all cut pile

---

**MATERIALS:** 100% New Zealand wool

---

**PILE HEIGHT:** Cut 1/2"

---

**DENSITY:** 2 ply, 80 knots per sq in.

---

**AVAILABLE SIZES:** 8'x10' | 9'x12'

---

**ORIGIN:** Designed in Portland, Maine and responsibly handcrafted in India

---

Available to order in custom sizes, colors, constructions and materials. Contact us at **800.255.9454** to discuss custom options.

All designs copyright angela adams.





# angela adams

## IN STOCK AREA RUG SPECIFICATIONS

---

**DESIGN:** Macy

---

**COLORWAY:** Hemp

---

**CONSTRUCTION:** Hand-tufted, cut and loop pile

---

**MATERIALS:** 100% New Zealand wool, cotton backing and synthetic latex adhesive

---

**PILE HEIGHT:** Loop 3/8"; Cut 1/2"

---

**DENSITY:** 2 ply, 25-30 tufts per sq in.

---

**AVAILABLE SIZES:** 3'x5' | 2.5'x8' | 5'x8' | 8'x10' | 9'x12'

---

**ORIGIN:** Designed in Portland, Maine and responsibly handcrafted in India

---

Available to order in custom sizes, colors, constructions and materials. Contact us at **800.255.9454** to discuss custom options.

All designs copyright angela adams.

# angela adams

## IN STOCK AREA RUG SPECIFICATIONS

---

**DESIGN:** Majesty

---

**COLORWAY:** B+W

---

**CONSTRUCTION:** Hand-tufted, cut and loop pile

---

**MATERIALS:** 100% New Zealand wool, cotton backing and synthetic latex adhesive

---

**PILE HEIGHT:** Loop 1/2"; Cut 3/4"

---

**DENSITY:** 2 ply, 25-30 tufts per sq in.

---

**AVAILABLE SIZES:** 3'R

---

**ORIGIN:** Designed in Portland, Maine and responsibly handcrafted in India

---

Available to order in custom sizes, colors, constructions and materials. Contact us at **800.255.9454** to discuss custom options.

All designs copyright angela adams.





# angela adams

## IN STOCK AREA RUG SPECIFICATIONS

---

**DESIGN:** Majesty

---

**COLORWAY:** Blue

---

**CONSTRUCTION:** Hand-tufted, cut and loop pile

---

**MATERIALS:** 100% New Zealand wool, cotton backing and synthetic latex adhesive

---

**PILE HEIGHT:** Loop 1/2"; Cut 3/4"

---

**DENSITY:** 2 ply, 25-30 tufts per sq in.

---

**AVAILABLE SIZES:** 3'R

---

**ORIGIN:** Designed in Portland, Maine and responsibly handcrafted in India

---

Available to order in custom sizes, colors, constructions and materials. Contact us at **800.255.9454** to discuss custom options.

All designs copyright angela adams.



# angela adams

## IN STOCK AREA RUG SPECIFICATIONS

---

**DESIGN:** Majesty

---

**COLORWAY:** Finch

---

**CONSTRUCTION:** Hand-tufted, cut and loop pile

---

**MATERIALS:** 100% New Zealand wool, cotton backing and synthetic latex adhesive

---

**PILE HEIGHT:** Loop 1/2"; Cut 3/4"

---

**DENSITY:** 2 ply, 25-30 tufts per sq in.

---

**AVAILABLE SIZES:** 3'R

---

**ORIGIN:** Designed in Portland, Maine and responsibly handcrafted in India

---

Available to order in custom sizes, colors, constructions and materials. Contact us at **800.255.9454** to discuss custom options.

All designs copyright angela adams.





# angela adams

## IN STOCK AREA RUG SPECIFICATIONS

---

**DESIGN:** Majesty

---

**COLORWAY:** Slate

---

**CONSTRUCTION:** Hand-tufted, cut and loop pile

---

**MATERIALS:** 100% New Zealand wool, cotton backing and synthetic latex adhesive

---

**PILE HEIGHT:** Loop 1/2"; Cut 3/4"

---

**DENSITY:** 2 ply, 25-30 tufts per sq in.

---

**AVAILABLE SIZES:** 3'R

---

**ORIGIN:** Designed in Portland, Maine and responsibly handcrafted in India

---

Available to order in custom sizes, colors, constructions and materials. Contact us at **800.255.9454** to discuss custom options.

All designs copyright angela adams.





# angela adams

## IN STOCK AREA RUG SPECIFICATIONS

---

**DESIGN:** Marsden

---

**COLORWAY:** Blue

---

**CONSTRUCTION:** Hand-tufted, all cut pile

---

**MATERIALS:** 100% New Zealand wool, cotton backing and synthetic latex adhesive

---

**PILE HEIGHT:** Cut 3/4"

---

**DENSITY:** 2 ply, 25-30 tufts per sq in.

---

**AVAILABLE SIZES:** 8'x10' | 9'x12'

---

**ORIGIN:** Designed in Portland, Maine and responsibly handcrafted in India

---

Available to order in custom sizes, colors, constructions and materials. Contact us at **800.255.9454** to discuss custom options.

All designs copyright angela adams.





# angela adams

## IN STOCK AREA RUG SPECIFICATIONS

---

**DESIGN:** Marsden

---

**COLORWAY:** Citron

---

**CONSTRUCTION:** Hand-tufted, all cut pile

---

**MATERIALS:** 100% New Zealand wool, cotton backing and synthetic latex adhesive

---

**PILE HEIGHT:** Cut 3/4"

---

**DENSITY:** 2 ply, 25-30 tufts per sq in.

---

**AVAILABLE SIZES:** 3'x5' | 2.5'x8' | 5'x8' | 8'R | 8'x10' | 9'x12'

---

**ORIGIN:** Designed in Portland, Maine and responsibly handcrafted in India

---

Available to order in custom sizes, colors, constructions and materials. Contact us at **800.255.9454** to discuss custom options.

All designs copyright angela adams.

# angela adams

## IN STOCK AREA RUG SPECIFICATIONS

---

**DESIGN:** Moonrise

---

**COLORWAY:** Graphite

---

**CONSTRUCTION:** Hand-tufted, all cut pile

---

**MATERIALS:** 100% New Zealand wool and Tencel, cotton backing and synthetic latex adhesive

---

**PILE HEIGHT:** Cut 3/4"

---

**DENSITY:** 4 ply, 60 tufts per sq in.

---

**AVAILABLE SIZES:** 8'x10' | 9'x12'

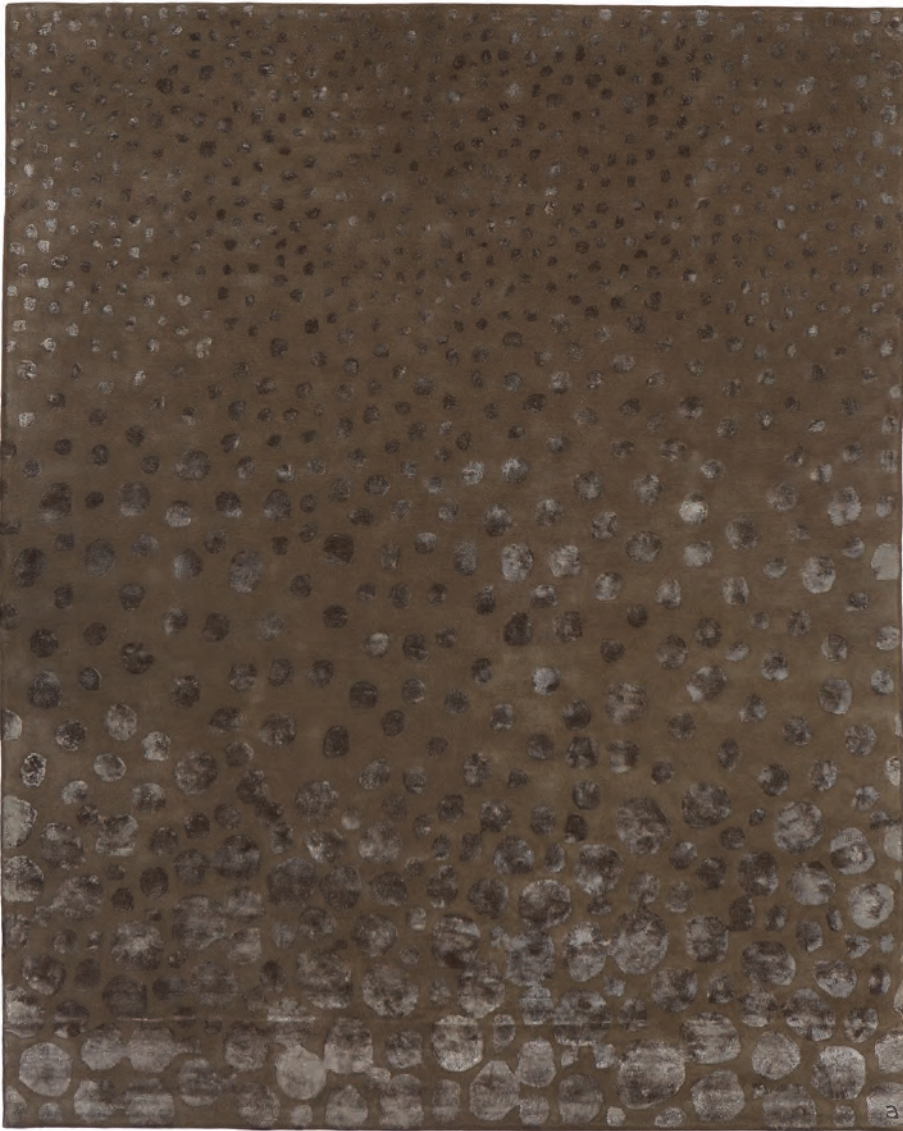
---

**ORIGIN:** Designed in Portland, Maine and responsibly handcrafted in India

---

Available to order in custom sizes, colors, constructions and materials. Contact us at **800.255.9454** to discuss custom options.

All designs copyright angela adams.





# angela adams

## IN STOCK AREA RUG SPECIFICATIONS

---

**DESIGN:** Nebula

---

**COLORWAY:** Dream

---

**CONSTRUCTION:** Hand-tufted, cut and loop pile

---

**MATERIALS:** 100% New Zealand wool, cotton backing and synthetic latex adhesive

---

**PILE HEIGHT:** Loop 1/3"; Cut 1/2" - 1 1/4"

---

**DENSITY:** 4 ply, 60 tufts per sq in.

---

**AVAILABLE SIZES:** 8'x10' | 9'x12'

---

**ORIGIN:** Designed in Portland, Maine and responsibly handcrafted in India

---

Available to order in custom sizes, colors, constructions and materials. Contact us at **800.255.9454** to discuss custom options.

All designs copyright angela adams.



# angela adams

## IN STOCK AREA RUG SPECIFICATIONS

---

**DESIGN:** Nebula

---

**COLORWAY:** Glow

---

**CONSTRUCTION:** Hand-tufted, cut and loop pile

---

**MATERIALS:** 100% New Zealand wool, cotton backing and synthetic latex adhesive

---

**PILE HEIGHT:** Loop 1/3"; Cut 1/2" - 1 1/4"

---

**DENSITY:** 4 ply, 60 tufts per sq in.

---

**AVAILABLE SIZES:** 8'x10' | 9'x12'

---

**ORIGIN:** Designed in Portland, Maine and responsibly handcrafted in India

---

Available to order in custom sizes, colors, constructions and materials. Contact us at **800.255.9454** to discuss custom options.

All designs copyright angela adams.





# angela adams

## IN STOCK AREA RUG SPECIFICATIONS

---

**DESIGN:** Ocean

---

**COLORWAY:** Lava

---

**CONSTRUCTION:** Hand-tufted, cut and loop pile

---

**MATERIALS:** 100% New Zealand wool, cotton backing and synthetic latex adhesive

---

**PILE HEIGHT:** Loop 1/2"; Cut 3/4" - 1"

---

**DENSITY:** 2 ply, 25-30 tufts per sq in.

---

**AVAILABLE SIZES:** 3'x5' | 2.5'x8' | 5'x8' | 8'x10' | 9'x12'

---

**ORIGIN:** Designed in Portland, Maine and responsibly handcrafted in India

---

Available to order in custom sizes, colors, constructions and materials. Contact us at **800.255.9454** to discuss custom options.

All designs copyright angela adams.



# angela adams

## IN STOCK AREA RUG SPECIFICATIONS

---

**DESIGN:** Ocean

---

**COLORWAY:** Natural

---

**CONSTRUCTION:** Hand-tufted, cut and loop pile

---

**MATERIALS:** 100% New Zealand wool, cotton backing and synthetic latex adhesive

---

**PILE HEIGHT:** Loop 1/2"; Cut 3/4" - 1"

---

**DENSITY:** 2 ply, 25-30 tufts per sq in.

---

**AVAILABLE SIZES:** 3'x5' | 2.5'x8' | 5'x8' | 8'x10' | 9'x12'

---

**ORIGIN:** Designed in Portland, Maine and responsibly handcrafted in India

---

Available to order in custom sizes, colors, constructions and materials. Contact us at **800.255.9454** to discuss custom options.

All designs copyright angela adams.





# angela adams

## IN STOCK AREA RUG SPECIFICATIONS

---

**DESIGN:** Ocean

---

**COLORWAY:** Seaglass

---

**CONSTRUCTION:** Hand-tufted, cut and loop pile

---

**MATERIALS:** 100% New Zealand wool, cotton backing and synthetic latex adhesive

---

**PILE HEIGHT:** Loop 1/2"; Cut 3/4" - 1"

---

**DENSITY:** 2 ply, 25-30 tufts per sq in.

---

**AVAILABLE SIZES:** 3'x5' | 2.5'x8' | 5'x8' | 8'R | 8'x10' | 9'x12'

---

**ORIGIN:** Designed in Portland, Maine and responsibly handcrafted in India

---

Available to order in custom sizes, colors, constructions and materials. Contact us at **800.255.9454** to discuss custom options.

All designs copyright angela adams.



# angela adams

## IN STOCK AREA RUG SPECIFICATIONS

---

**DESIGN:** Owl Feather

---

**COLORWAY:** Snowy

---

**CONSTRUCTION:** Hand-tufted, all cut pile

---

**MATERIALS:** 100% New Zealand wool, cotton backing and synthetic latex adhesive

---

**PILE HEIGHT:** Cut 1"

---

**DENSITY:** 2 ply, 25-30 tufts per sq in.

---

**AVAILABLE SIZES:** 5'x8' | 8'x10' | 9'x12'

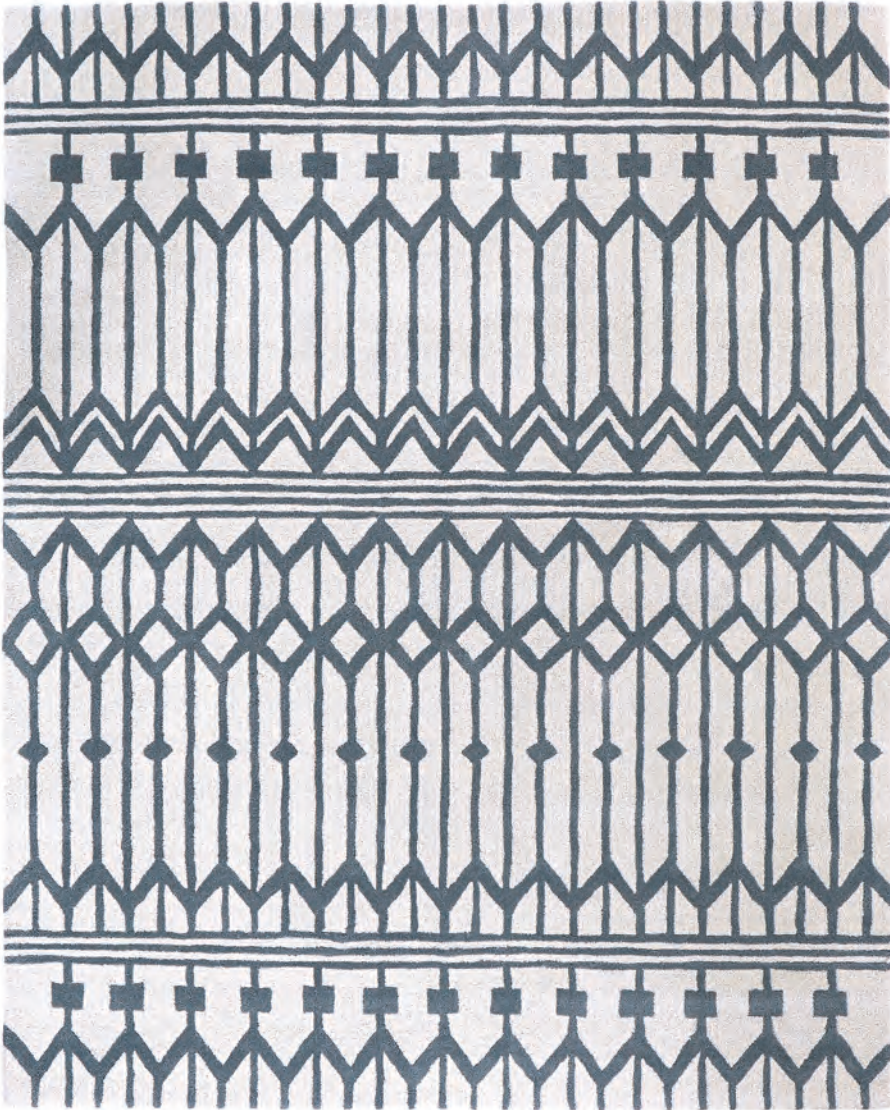
---

**ORIGIN:** Designed in Portland, Maine and responsibly handcrafted in India

---

Available to order in custom sizes, colors, constructions and materials. Contact us at **800.255.9454** to discuss custom options.

All designs copyright angela adams.







# angela adams

## IN STOCK AREA RUG SPECIFICATIONS

---

**DESIGN:** Pinstripes

---

**COLORWAY:** Bluebird

---

**CONSTRUCTION:** Hand-tufted, all cut pile

---

**MATERIALS:** 100% New Zealand wool, cotton backing and synthetic latex adhesive

---

**PILE HEIGHT:** Cut 10mm (3/8").  
Maximum thickness 1/2" from floor. Edge to crush to 1/4".

---

**DENSITY:** 4 ply, 60 tufts per sq in.

---

**AVAILABLE SIZES:** 3'x5' | 5'x8' | 8'x10'

---

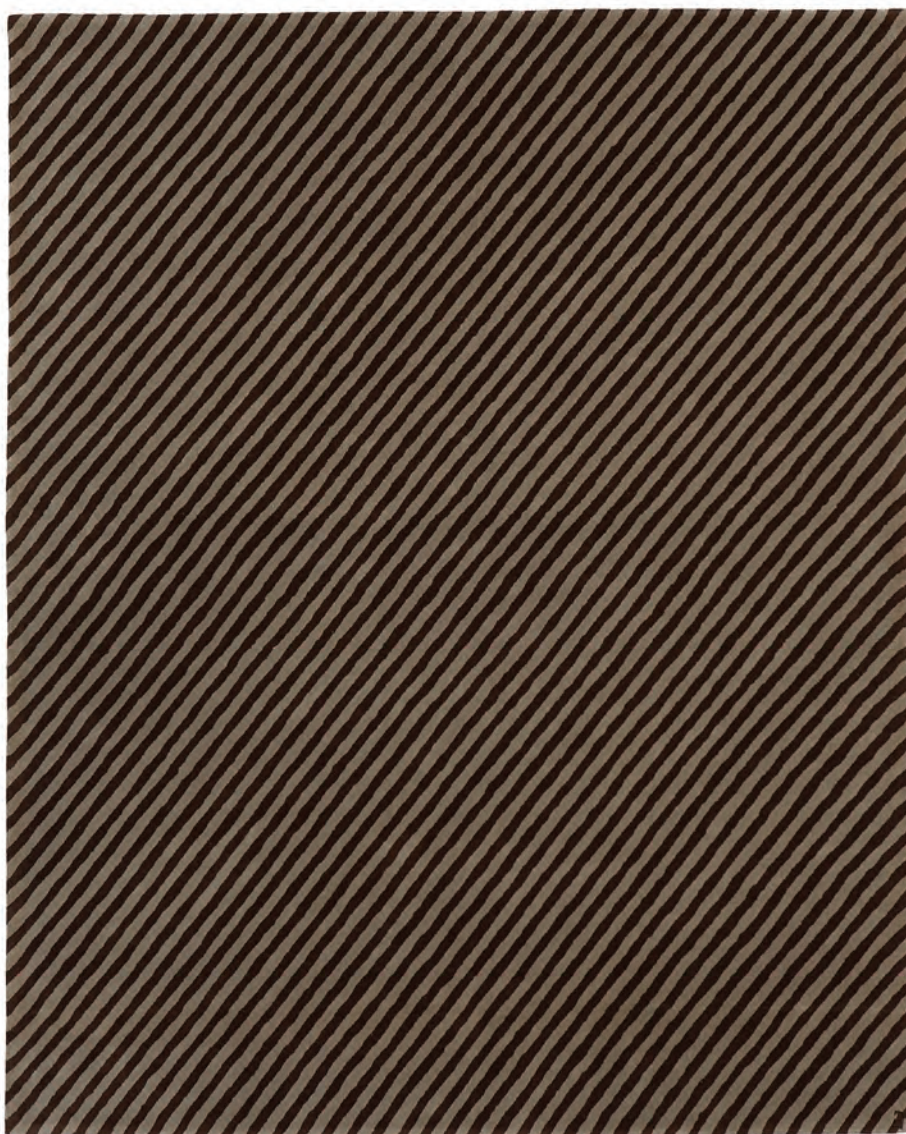
**ORIGIN:** Designed in Portland, Maine and responsibly handcrafted in India

---

Available to order in custom sizes, colors, constructions and materials. Contact us at **800.255.9454** to discuss custom options.

All designs copyright angela adams.





# angela adams

## IN STOCK AREA RUG SPECIFICATIONS

---

**DESIGN:** Pinstripes

---

**COLORWAY:** Cocoa

---

**CONSTRUCTION:** Hand-tufted, all cut pile

---

**MATERIALS:** 100% New Zealand wool, cotton backing and synthetic latex adhesive

---

**PILE HEIGHT:** Cut 10mm (3/8").

Maximum thickness 1/2" from floor. Edge to crush to 1/4".

---

**DENSITY:** 4 ply, 60 tufts per sq in.

---

**AVAILABLE SIZES:** 3'x5' | 5'x8' | 8'x10'

---

**ORIGIN:** Designed in Portland, Maine and responsibly handcrafted in India

---

Available to order in custom sizes, colors, constructions and materials. Contact us at **800.255.9454** to discuss custom options.

All designs copyright angela adams.



# angela adams

## IN STOCK AREA RUG SPECIFICATIONS

---

**DESIGN:** Pinstripes

---

**COLORWAY:** Poppy

---

**CONSTRUCTION:** Hand-tufted, all cut pile

---

**MATERIALS:** 100% New Zealand wool, cotton backing and synthetic latex adhesive

---

**PILE HEIGHT:** Cut 10mm (3/8").

Maximum thickness 1/2" from floor. Edge to crush to 1/4".

---

**DENSITY:** 4 ply, 60 tufts per sq in.

---

**AVAILABLE SIZES:** 3'x5' | 5'x8' | 8'x10'

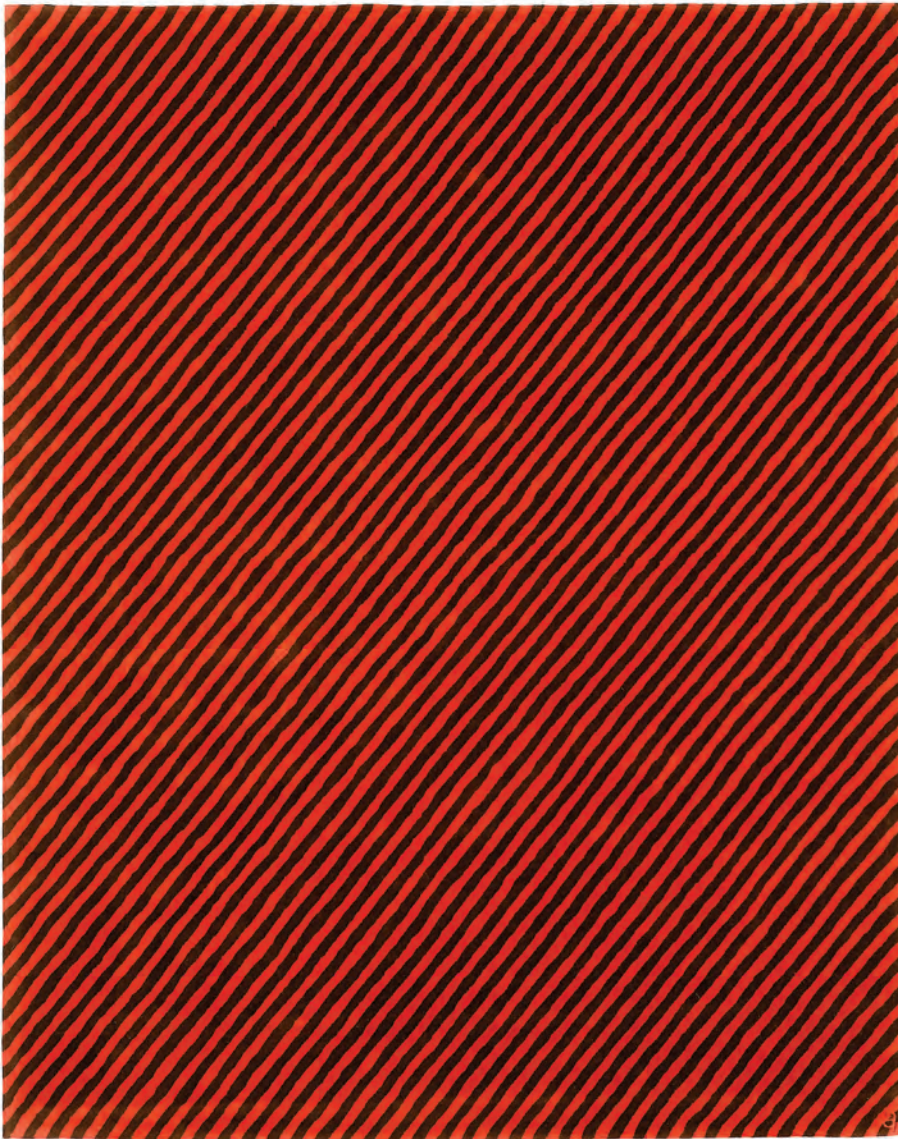
---

**ORIGIN:** Designed in Portland, Maine and responsibly handcrafted in India

---

Available to order in custom sizes, colors, constructions and materials. Contact us at **800.255.9454** to discuss custom options.

All designs copyright angela adams.





# angela adams

## IN STOCK RUG SPECIFICATIONS

---

**DESIGN:** Pyrite

---

**COLORWAY:** Emerald

---

**CONSTRUCTION:** Hand-knotted, all cut pile

---

**MATERIALS:** 100% New Zealand wool

---

**PILE HEIGHT:** Cut 1/2"

---

**DENSITY:** 2 ply, 80 knots per sq in.

---

**AVAILABLE SIZES:** 3'x5' | 5'x8' | 8'x10' | 9'x12'

---

**ORIGIN:** Designed in Portland, Maine and responsibly handcrafted in India

---

Available to order in custom sizes, colors, constructions and materials. Contact us at **800.255.9454** to discuss custom options.

All designs copyright angela adams.





# angela adams

## IN STOCK AREA RUG SPECIFICATIONS

---

**DESIGN:** Pyrite

---

**COLORWAY:** Topaz

---

**CONSTRUCTION:** Hand-knotted, all cut pile

---

**MATERIALS:** 100% New Zealand wool

---

**PILE HEIGHT:** Cut 1/2"

---

**DENSITY:** 2 ply, 80 knots per sq in.

---

**AVAILABLE SIZES:** 3'x5' | 5'x8' | 8'x10' | 9'x12'

---

**ORIGIN:** Designed in Portland, Maine and responsibly handcrafted in India

---

Available to order in custom sizes, colors, constructions and materials. Contact us at **800.255.9454** to discuss custom options.

All designs copyright angela adams.



# angela adams

## IN STOCK AREA RUG SPECIFICATIONS

---

**DESIGN:** Sea Cave

---

**COLORWAY:** Aqua

---

**CONSTRUCTION:** Hand-knotted, all cut pile

---

**MATERIALS:** 100% New Zealand wool

---

**PILE HEIGHT:** Cut 1/2"

---

**DENSITY:** 2 ply, 80 knots per sq in.

---

**AVAILABLE SIZES:** 2.5'x8'

---

**ORIGIN:** Designed in Portland, Maine and responsibly handcrafted in India

---

Available to order in custom sizes, colors, constructions and materials. Contact us at **800.255.9454** to discuss custom options.

All designs copyright angela adams.





# angela adams

## IN STOCK AREA RUG SPECIFICATIONS

---

**DESIGN:** Sea Cave

---

**COLORWAY:** Coal

---

**CONSTRUCTION:** Hand-knotted, all cut pile

---

**MATERIALS:** 100% New Zealand wool

---

**PILE HEIGHT:** Cut 1/2"

---

**DENSITY:** 2 ply, 80 knots per sq in.

---

**AVAILABLE SIZES:** 2.5'x8'

---

**ORIGIN:** Designed in Portland, Maine and responsibly handcrafted in India

---

Available to order in custom sizes, colors, constructions and materials. Contact us at **800.255.9454** to discuss custom options.

All designs copyright angela adams.

# angela adams

## IN STOCK AREA RUG SPECIFICATIONS

---

**DESIGN:** Spacewave

---

**COLORWAY:** Wisp

---

**CONSTRUCTION:** Hand-tufted, all cut pile

---

**MATERIALS:** 100% New Zealand wool and Tencel, cotton backing and synthetic latex adhesive

---

**PILE HEIGHT:** Cut 1/2"

---

**DENSITY:** 4 ply, 60 tufts per sq in.

---

**AVAILABLE SIZES:** 8'x10' | 9'x12'

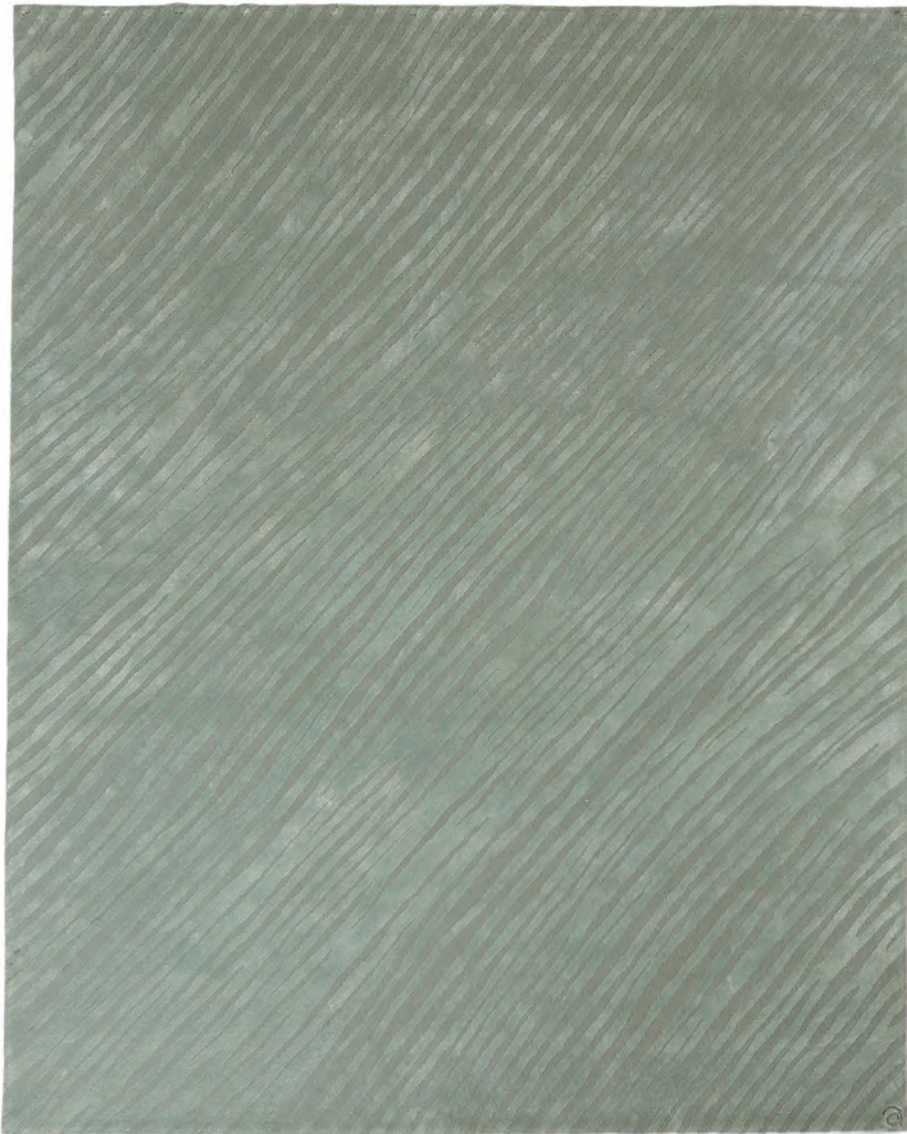
---

**ORIGIN:** Designed in Portland, Maine and responsibly handcrafted in India

---

Available to order in custom sizes, colors, constructions and materials. Contact us at **800.255.9454** to discuss custom options.

All designs copyright angela adams.







# angela adams

## IN STOCK AREA RUG SPECIFICATIONS

---

**DESIGN:** Spike

---

**COLORWAY:** Pool

---

**CONSTRUCTION:** Hand-tufted, cut and loop pile

---

**MATERIALS:** 100% New Zealand wool, cotton backing and synthetic latex adhesive

---

**PILE HEIGHT:** Loop 1/2"; Cut 3/4"

---

**DENSITY:** 2 ply, 25-30 tufts per sq in.

---

**AVAILABLE SIZES:** 3'x5' | 2.5'x8' | 5'x8' | 8'x10' | 9'x12'

---

**ORIGIN:** Designed in Portland, Maine and responsibly handcrafted in India

---

Available to order in custom sizes, colors, constructions and materials. Contact us at **800.255.9454** to discuss custom options.

All designs copyright angela adams.





# angela adams

## IN STOCK AREA RUG SPECIFICATIONS

---

**DESIGN:** Spike

---

**COLORWAY:** Rainbow

---

**CONSTRUCTION:** Hand-tufted, cut and loop pile

---

**MATERIALS:** 100% New Zealand wool, cotton backing and synthetic latex adhesive

---

**PILE HEIGHT:** Loop 1/2"; Cut 3/4"

---

**DENSITY:** 2 ply, 25-30 tufts per sq in.

---

**AVAILABLE SIZES:** 3'x5' | 5'x8' | 8'x10' | 9'x12'

---

**ORIGIN:** Designed in Portland, Maine and responsibly handcrafted in India

---

Available to order in custom sizes, colors, constructions and materials. Contact us at **800.255.9454** to discuss custom options.

All designs copyright angela adams.



# angela adams

## IN STOCK AREA RUG SPECIFICATIONS

---

**DESIGN:** Spock

---

**COLORWAY:** Mars

---

**CONSTRUCTION:** Hand-tufted, all cut pile

---

**MATERIALS:** 100% New Zealand wool, cotton backing and synthetic latex adhesive

---

**PILE HEIGHT:** Cut 10mm (3/8").

Maximum thickness 1/2" from floor. Edge to crush to 1/4".

---

**DENSITY:** 4 ply, 60 tufts per sq in.

---

**AVAILABLE SIZES:** 5'x8' | 8'x10' | 9'x12'

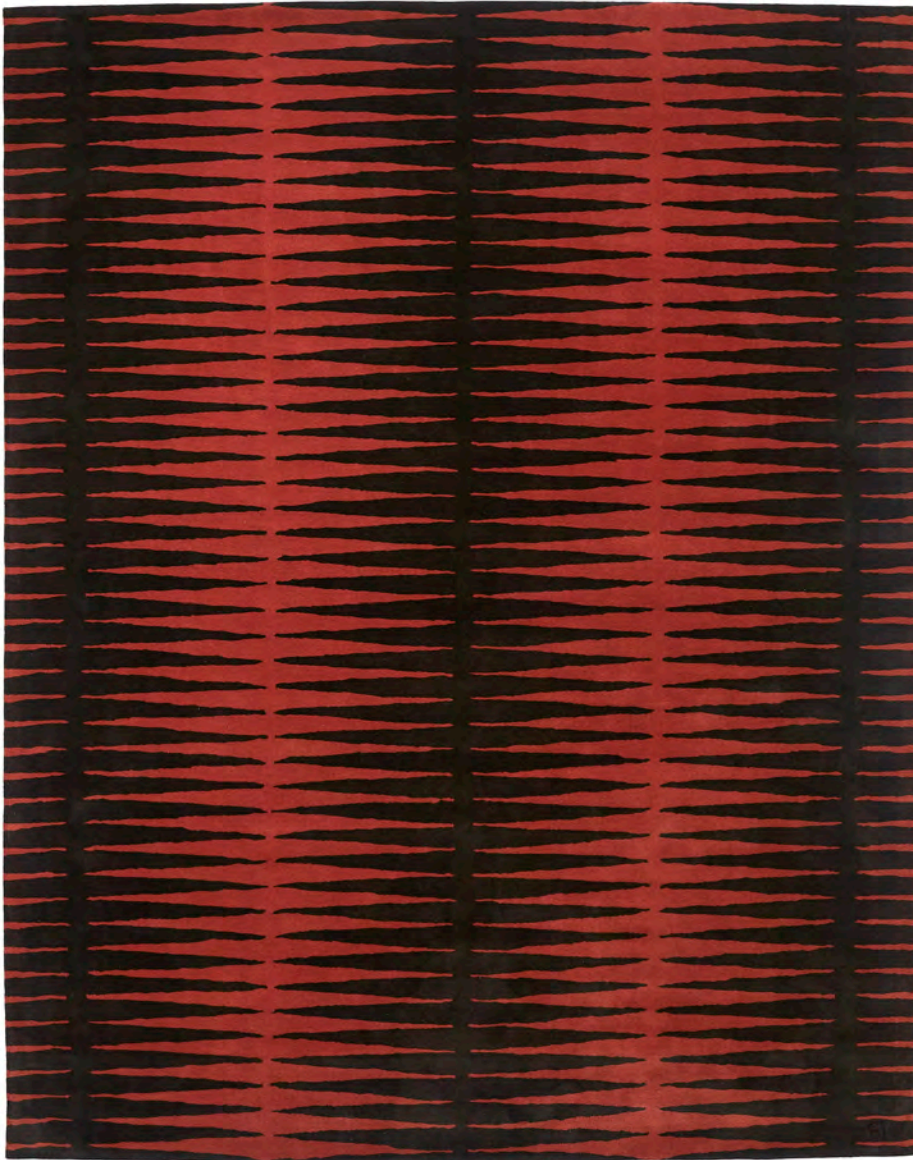
---

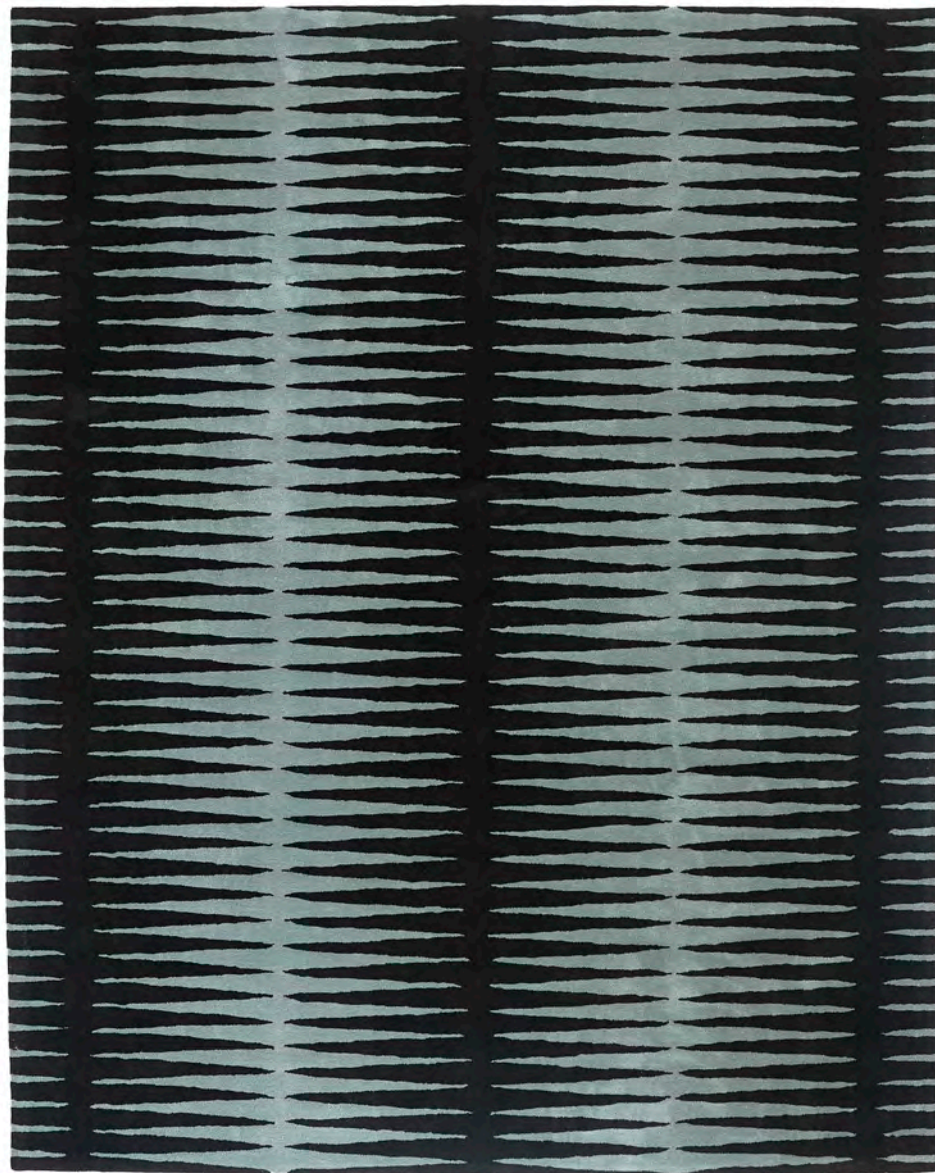
**ORIGIN:** Designed in Portland, Maine and responsibly handcrafted in India

---

Available to order in custom sizes, colors, constructions and materials. Contact us at **800.255.9454** to discuss custom options.

All designs copyright angela adams.





# angela adams

## IN STOCK AREA RUG SPECIFICATIONS

---

**DESIGN:** Spock

---

**COLORWAY:** Pluto

---

**CONSTRUCTION:** Hand-tufted, all cut pile

---

**MATERIALS:** 100% New Zealand wool, cotton backing and synthetic latex adhesive

---

**PILE HEIGHT:** Cut 10mm (3/8").

Maximum thickness 1/2" from floor. Edge to crush to 1/4".

---

**DENSITY:** 4 ply, 60 tufts per sq in.

---

**AVAILABLE SIZES:** 5'x8' | 8'x10' | 9'x12'

---

**ORIGIN:** Designed in Portland, Maine and responsibly handcrafted in India

---

Available to order in custom sizes, colors, constructions and materials. Contact us at **800.255.9454** to discuss custom options.

All designs copyright angela adams.





# angela adams

## IN STOCK AREA RUG SPECIFICATIONS

---

**DESIGN:** Spock

---

**COLORWAY:** Saturn

---

**CONSTRUCTION:** Hand-tufted, all cut pile

---

**MATERIALS:** 100% New Zealand wool, cotton backing and synthetic latex adhesive

---

**PILE HEIGHT:** Cut 10mm (3/8").

Maximum thickness 1/2" from floor. Edge to crush to 1/4".

---

**DENSITY:** 4 ply, 60 tufts per sq in.

---

**AVAILABLE SIZES:** 3'x10' | 5'x8' | 8'x10' | 9'x12'

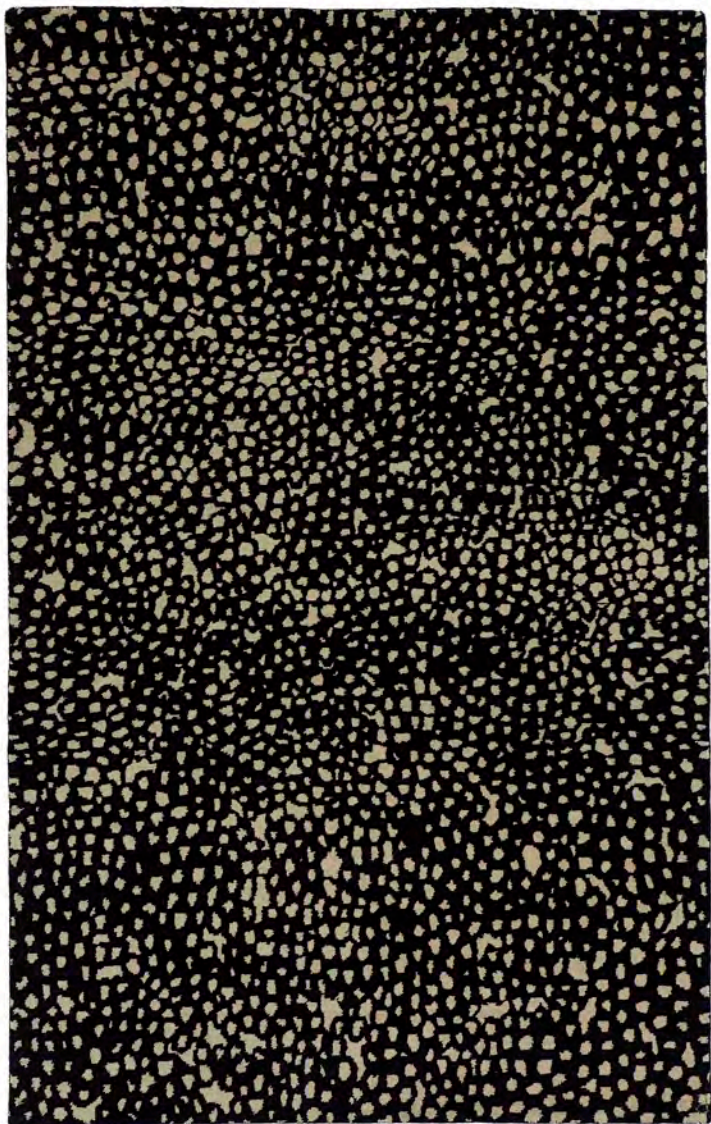
---

**ORIGIN:** Designed in Portland, Maine and responsibly handcrafted in India

---

Available to order in custom sizes, colors, constructions and materials. Contact us at **800.255.9454** to discuss custom options.

All designs copyright angela adams.



# angela adams

## IN STOCK AREA RUG SPECIFICATIONS

---

**DESIGN:** Starry

---

**COLORWAY:** Onyx

---

**CONSTRUCTION:** Hand-knotted, all cut pile

---

**MATERIALS:** 100% New Zealand wool

---

**PILE HEIGHT:** Cut 1/2"

---

**DENSITY:** 2 ply, 80 knots per sq in.

---

**AVAILABLE SIZES:** 3'x5' | 5'x8' | 8'x10' | 9'x12'

---

**ORIGIN:** Designed in Portland, Maine and responsibly handcrafted in India

---

Available to order in custom sizes, colors, constructions and materials. Contact us at **800.255.9454** to discuss custom options.

All designs copyright angela adams.



# angela adams

## IN STOCK AREA RUG SPECIFICATIONS

---

**DESIGN:** Starry

---

**COLORWAY:** Sapphire

---

**CONSTRUCTION:** Hand-knotted, all cut pile

---

**MATERIALS:** 100% New Zealand wool

---

**PILE HEIGHT:** Cut 1/2"

---

**DENSITY:** 2 ply, 80 knots per sq in.

---

**AVAILABLE SIZES:** 3'x5' | 5'x8' | 8'x10' | 9'x12'

---

**ORIGIN:** Designed in Portland, Maine and responsibly handcrafted in India

---

Available to order in custom sizes, colors, constructions and materials. Contact us at **800.255.9454** to discuss custom options.

All designs copyright angela adams.







# angela adams

## IN STOCK AREA RUG SPECIFICATIONS

---

**DESIGN:** Surf

---

**COLORWAY:** Blue

---

**CONSTRUCTION:** Hand-knotted, all cut pile

---

**MATERIALS:** 100% New Zealand wool

---

**PILE HEIGHT:** Cut 1/2"

---

**DENSITY:** 2 ply, 80 knots per sq in.

---

**AVAILABLE SIZES:** 5'x8' | 8'x10' | 9'x12'

---

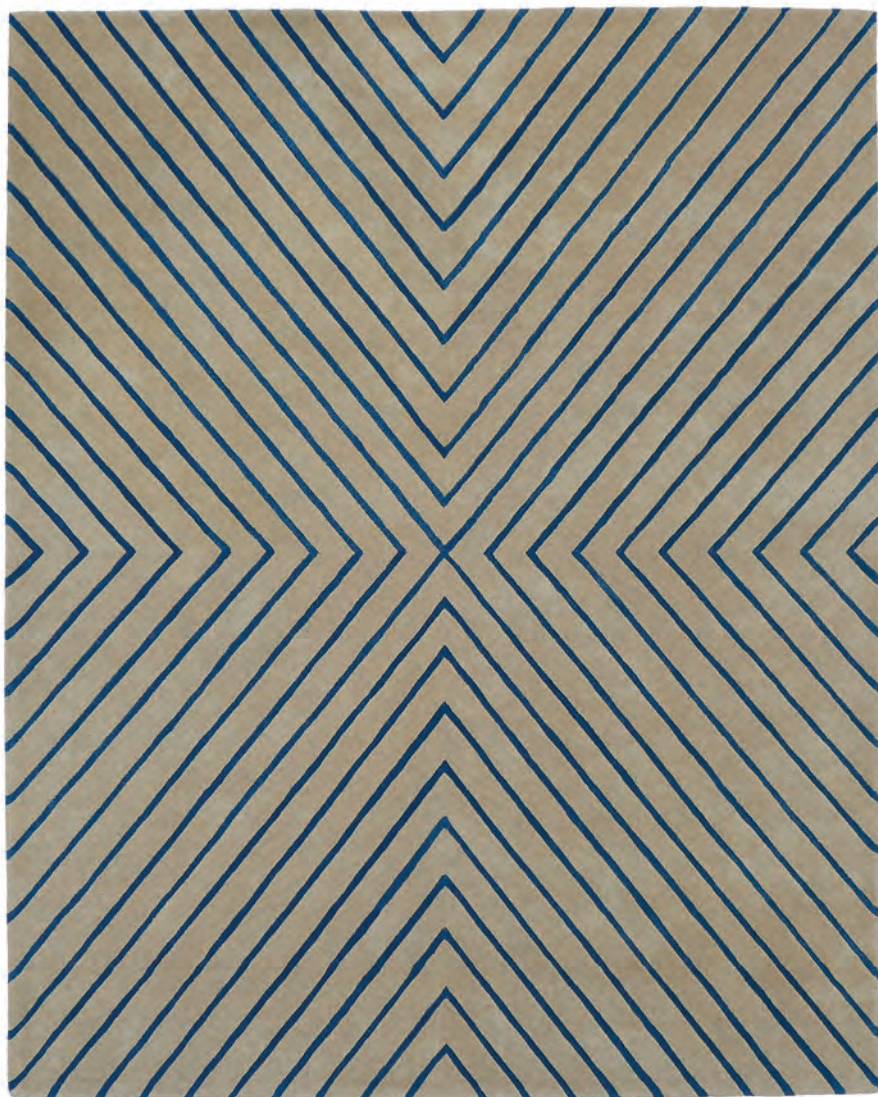
**ORIGIN:** Designed in Portland, Maine and responsibly handcrafted in India

---

Available to order in custom sizes, colors, constructions and materials. Contact us at **800.255.9454** to discuss custom options.

All designs copyright angela adams.





# angela adams

## IN STOCK AREA RUG SPECIFICATIONS

---

**DESIGN:** Vibes

---

**COLORWAY:** Burton

---

**CONSTRUCTION:** Hand-tufted, cut and loop pile

---

**MATERIALS:** 100% New Zealand wool, cotton backing and synthetic latex adhesive

---

**PILE HEIGHT:** Loop 8mm (5/16"); Cut 10mm (3/8").  
Maximum thickness 1/2" from floor. Edge to crush to 1/4".

---

**DENSITY:** 4 ply, 60 tufts per sq in.

---

**AVAILABLE SIZES:** 5'x8' | 8'x10' | 9'x12'

---

**ORIGIN:** Designed in Portland, Maine and responsibly handcrafted in India

---

Available to order in custom sizes, colors, constructions and materials. Contact us at **800.255.9454** to discuss custom options.

All designs copyright angela adams.

# angela adams

## IN STOCK AREA RUG SPECIFICATIONS

---

**DESIGN:** Waves

---

**COLORWAY:** Drift

---

**CONSTRUCTION:** Hand-tufted, cut and loop pile

---

**MATERIALS:** 100% New Zealand wool, cotton backing and synthetic latex adhesive

---

**PILE HEIGHT:** Loop 3/4"; Cut 3/4"

---

**DENSITY:** 2 ply, 25-30 tufts per sq in.

---

**AVAILABLE SIZES:** 3'x5' | 2.5'x8' | 5'x8' | 8'x10' | 9'x12'

---

**ORIGIN:** Designed in Portland, Maine and responsibly handcrafted in India

---

Available to order in custom sizes, colors, constructions and materials. Contact us at **800.255.9454** to discuss custom options.

All designs copyright angela adams.





# angela adams

## IN STOCK AREA RUG SPECIFICATIONS

---

**DESIGN:** Waves

---

**COLORWAY:** Dusk

---

**CONSTRUCTION:** Hand-tufted, cut and loop pile

---

**MATERIALS:** 100% New Zealand wool, cotton backing and synthetic latex adhesive

---

**PILE HEIGHT:** Loop 3/4"; Cut 3/4"

---

**DENSITY:** 2 ply, 25-30 tufts per sq in.

---

**AVAILABLE SIZES:** 5'x8' | 8'x10' | 9'x12'

---

**ORIGIN:** Designed in Portland, Maine and responsibly handcrafted in India

---

Available to order in custom sizes, colors, constructions and materials. Contact us at **800.255.9454** to discuss custom options.

All designs copyright angela adams.





# angela adams

## IN STOCK AREA RUG SPECIFICATIONS

---

**DESIGN:** Woodland

---

**CONSTRUCTION:** Hand-tufted, cut and loop pile

---

**MATERIALS:** 100% New Zealand wool, cotton backing and synthetic latex adhesive

---

**PILE HEIGHT:** Loop 3/8"; Cut 1/2 - 3/4"

---

**DENSITY:** 4 ply, 60 tufts per sq in.

---

**AVAILABLE SIZES:** 3'x8' | 8'R | 9'x11'

---

**ORIGIN:** Designed in Portland, Maine and responsibly handcrafted in India

---

Available to order in custom sizes, colors, constructions and materials. Contact us at **800.255.9454** to discuss custom options.

All designs copyright angela adams.