

angela adams Publication, Volume 1

Angela Adams and Sherwood Hamill
Founders and Creative Direction

Ron Harrity
Associate Creative Director

Sabrina Volante
Designer

Photography and Film

Angela Adams

Sherwood Hamill

Ron Harrity

Sabrina Volante

Betsy McDonald

Cecily Pingree

Bill Trevaskis

LK Weiss

Models

Sarah Gray

Sarah Perry

Pam Mountain

David Cooper

Doreen Cabot

Carrie Brezzo

Alan Adams

Easton Adams

Foy Brown

Kelsey Jones

Brett Thompson

angela adams

angelaadams.com | Portland, Maine

Astral Garden

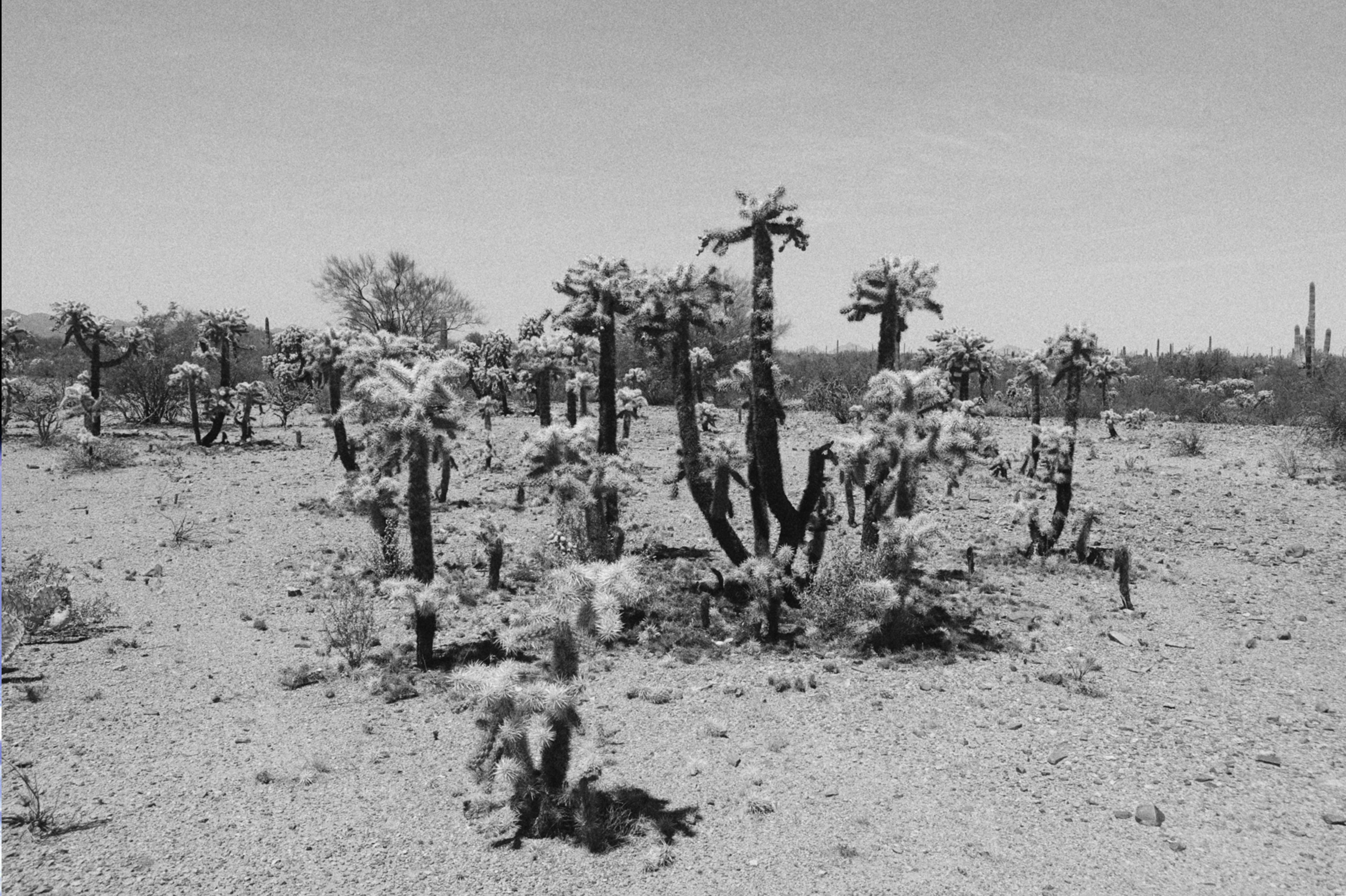
angela adams

Astral Garden

angela adams

angela adams

Based in Portland, Maine, angela adams is a home furnishings company dedicated to the principle that one's lifestyle should provide a constant source of inspiration. Devoted to a unique translation of the natural world, founders Angela Adams and Sherwood Hamill, along with a talented team, create a comprehensive approach to lifestyle and comfort embodied in each piece of furniture, area rug and textile.



BEING INSPIRED IS EVERYTHING.

It motivates us to explore and be adventurous. It challenges us to take risks and to push ourselves into uncharted territories, bringing us closer to the core of our inspirations.

WHAT WILL WE FIND WHEN WE REACH THE CORE?

A state of mind that calibrates our energy and elevates our spirits with boundless creativity and positive vibrations.

My inspiration flows like a heavy wave, gaining momentum as it gathers energy along its journey. One exploration leads to another, building dimensional planes that are balanced by the energy that fuels our inspirations.

A recent inspiration led me down a craggy path toward the center of the earth. Motivated by mystery and a magnetic attraction to minerals,

the **CAVE FANTASY** became a reality.

With the Earth's core as my heading, the discoveries along the way were endless. Fueled by the powerful energy of geology, the sparkling crystals and minerals expanded my mind and filled me with the sense of an energy that perpetually surrounds us, yet eludes us if we do not open our minds and hearts to it.

It was on this journey to the center of the earth that I blasted out, into the astral world, riding the energy of the minerals, embarking on a new adventure. It was there that I came upon

THE ASTRAL GARDEN.



CAVE FANTASY

A subterranean inspiration becomes an obsession.

An exploration into the Earth's core.

Where minerals grow like plants alongside underground rivers.

Crystals shine like phosphorescence, casting bright star-like reflections onto cave walls, reminding us of the vastness above ground.

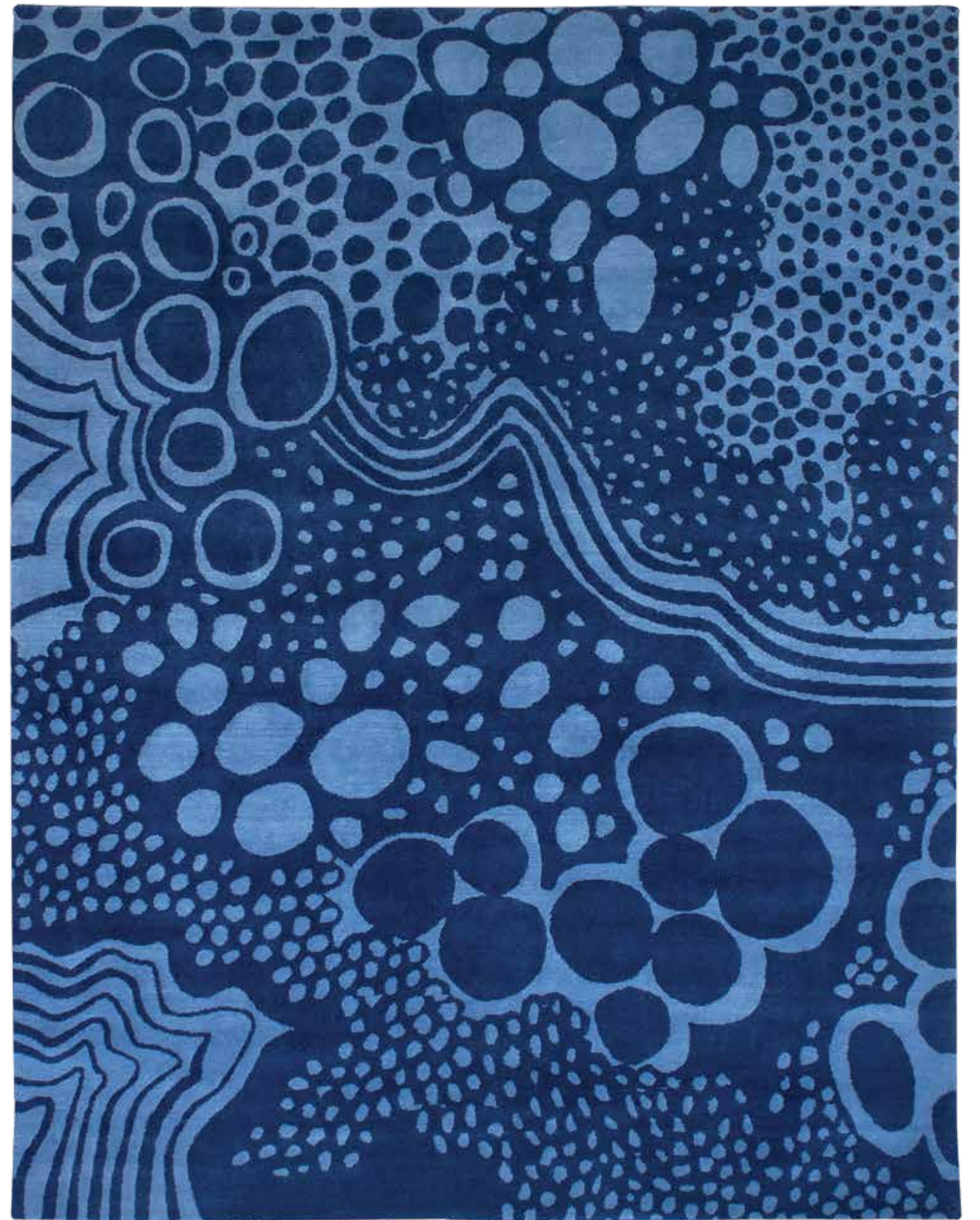
Thin cracks in the surface allow light to pour down deep into the core, providing essential light for an underground rainforest and new life that flourishes.

A sketching exercise evolves into an obsession with caves and the magical, mysterious worlds within them. Imagination takes over as exploration begins. Scale is unexpected. Tiny worlds live inside fractures and ancient rocks.

Enormous monolithic structures hold court and grow from every direction. Sounds and smells are otherworldly. Senses we were unaware of take over.

The Cave Fantasy begins...





Design: **GLACIER**

Color: **BLUE**

Collection:
CAVE FANTASY

Floes of ice that
are ever-changing.
Clusters of forms
bundle together,
pulling one another
along a vast seascape.

Design: STARRY

Color: ONYX

Collection:

CAVE FANTASY

Vast as the night sky,
the Starry pattern
resolves into a calming
and expansive body.



Design: PYRITE

Color: EMERALD

Collection:

CAVE FANTASY

The Pyrite stone
protects us from
negative energy and
physical danger,
promoting good
health and emotional
well-being.

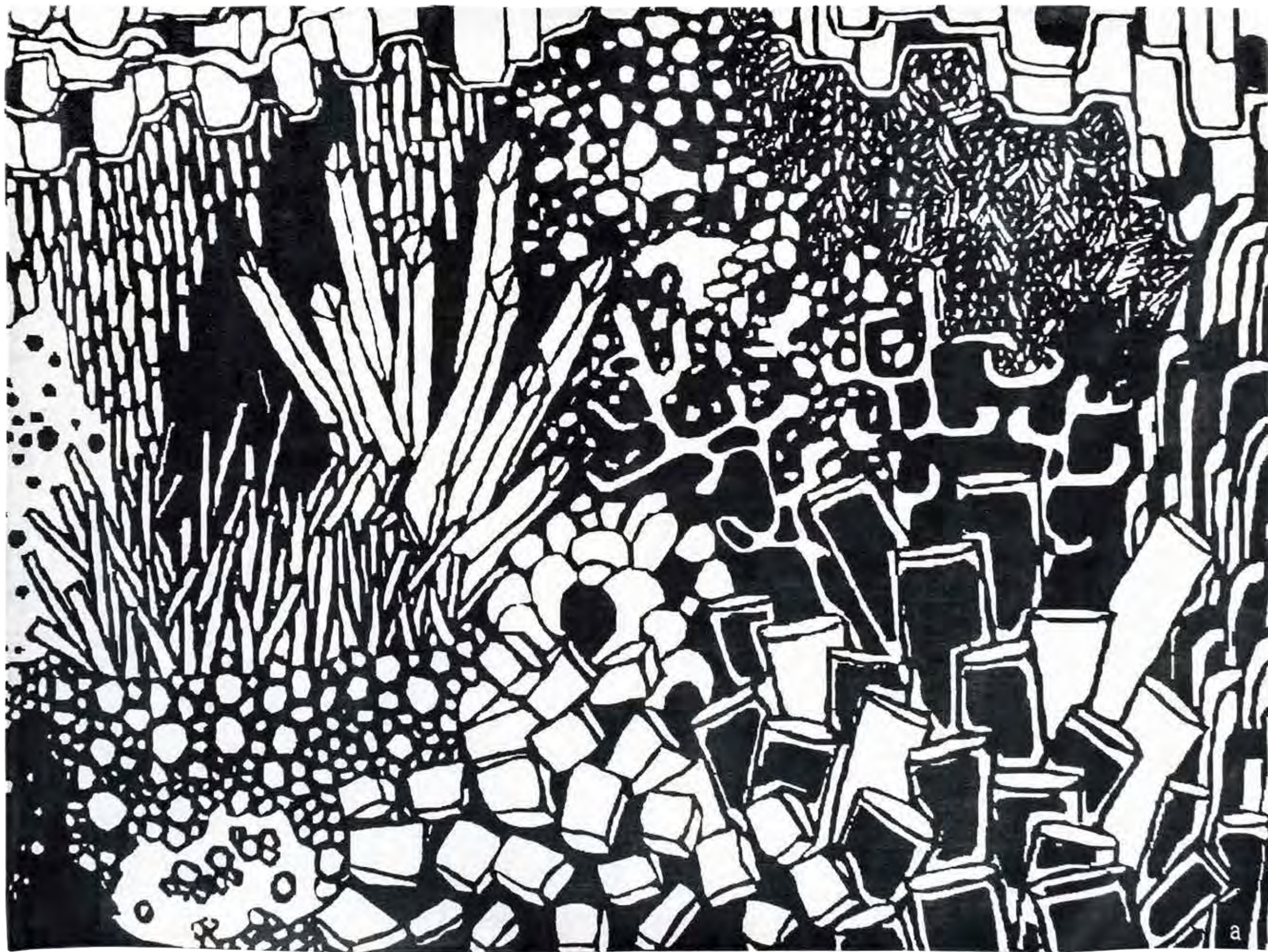


Design:
Origami End Table

Construction:
Handcrafted with
North American hardwood

Collection:
angela adams
by Sherwood Hamill

Elegant and sculptural,
like stalactites in an
ancient cave.



Design: CAVE FANTASY TAPESTRY

Material: HAND KNOTTED 100% SILK

Collection: CAVE FANTASY



ASTRAL GARDEN



ASTRAL GUIDE

INDIGO YANDELL

The astral world was uncharted territory for me. In the same way that its powerful energy pulled me in, it also vectored me on a course that intersected with Indigo Yandell, who became my Astral Guide.

I've known Indigo for years and have always been drawn to her positive energy and beautiful spirit. As the Astral Garden discoveries unfolded, Indigo became my guide, sharing the knowledge and experiences she has encountered along her own journey.

Angela: *You once told me that you were never going to waste another full moon. I find that mindful commitment to the Moon to be very inspiring. How do you approach the full moon—what does it mean to you?*

Indigo: Observing moon gazing is the ultimate way to connect to moon energy. It is a portal opportunity. Being aware of the magnified energy in the atmosphere, will keep your vibration high. Full moons are opportunities to have amplified manifestation ability, and they are also portal opportunities for people who are feeling the vibration. A portal opportunity could be a blissful moment feeling unconditional love from the divine source, because you are loved and protected by the forces around you if you are connected to them.

A: *Do you believe that the astral world is shaping life here on Earth?*

I: There is a multidimensional grid of energies overlaying the Earth. The 4th dimension is a realm in which beings in other dimensions can harness energy from humans in the 3rd dimension. That has the biggest effect on life on earth. This is why staying positive and in a high vibration is so important. You can access higher dimensional experience once you learn to tune in to it, it's all about your frequency. You can transcend the 4th dimension and tune into even higher divine energies that will fulfill your dreams. Once you engage with the astral realm you learn that you are the power.

**"OBSERVING MOON
GAZING IS THE
ULTIMATE WAY
TO CONNECT TO
MOON ENERGY."**



A: *Your positive energy is very strong and contagious. How do you channel that and maintain it?*

I: The source of energy that governs the universe is love. I find this to be very comforting as unconditional love is the highest vibration. I have embraced unconditional love and have become a channel for it to flow through.

Ultimately, all of our existence is sound, frequency and vibration. Electromagnetic waves coming from the universe could have an impact on our physical existence and creation. Other dimensions vibrating at different frequencies could simultaneously exist all around us.

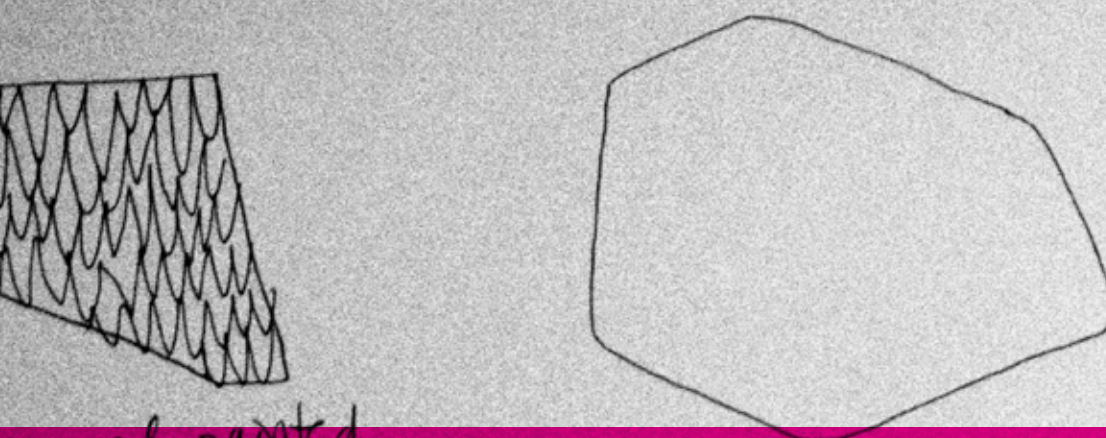
A: *How does the astral world impact current events?*

I: Whatever is going on with the planets will be played out on Earth. People are often channeling planetary energy and may not be aware of it. The 3rd dimension has been ruled by fear, ego and patriarchal energy for a long time. What we are seeing now are these old energies playing out. I believe collectively we can co-create a better world. A divine feminine energy is returning, due to a grand cycle of time. We have an opportunity to collectively connect to a higher power and have a divine existence in a higher vibration on earth.

Pay attention to the moon cycles and learn about natural time. Be aware of your surroundings, feelings and the emotions you are experiencing. Learn about your chakras.

Synchronicity is a sign you are tuning in.

Positive affirmations are an amazing way to see the universal energy in motion. Crystals work like an energy generator, emitting a high vibration that your field will resonate with, raising your vibe.



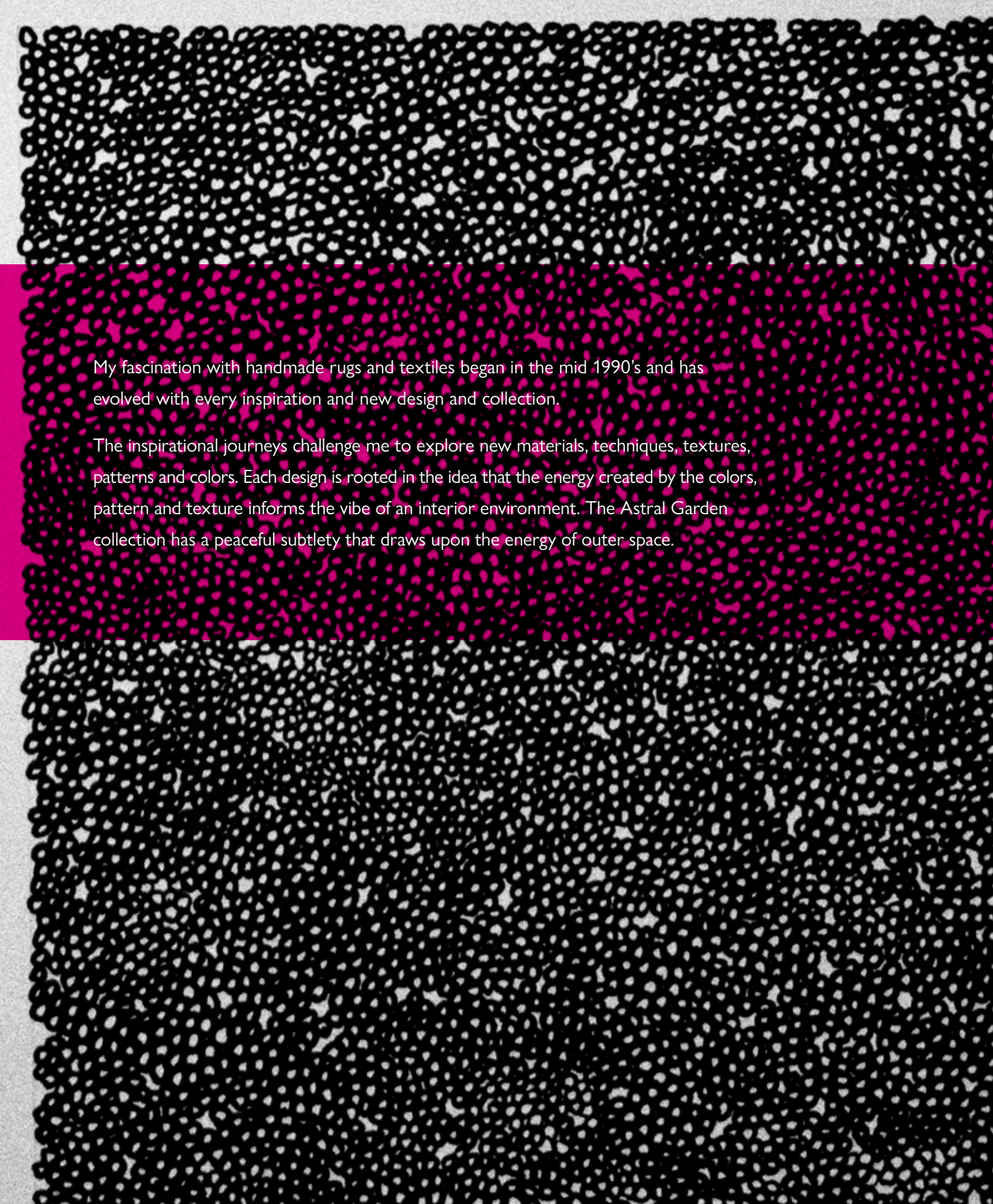
panel-painted

clouds

/sewn wall pt.

AREA RUGS

11x14 @ 1/4 scale, 3.4.13



My fascination with handmade rugs and textiles began in the mid 1990's and has evolved with every inspiration and new design and collection.

The inspirational journeys challenge me to explore new materials, techniques, textures, patterns and colors. Each design is rooted in the idea that the energy created by the colors, pattern and texture informs the vibe of an interior environment. The Astral Garden collection has a peaceful subtlety that draws upon the energy of outer space.

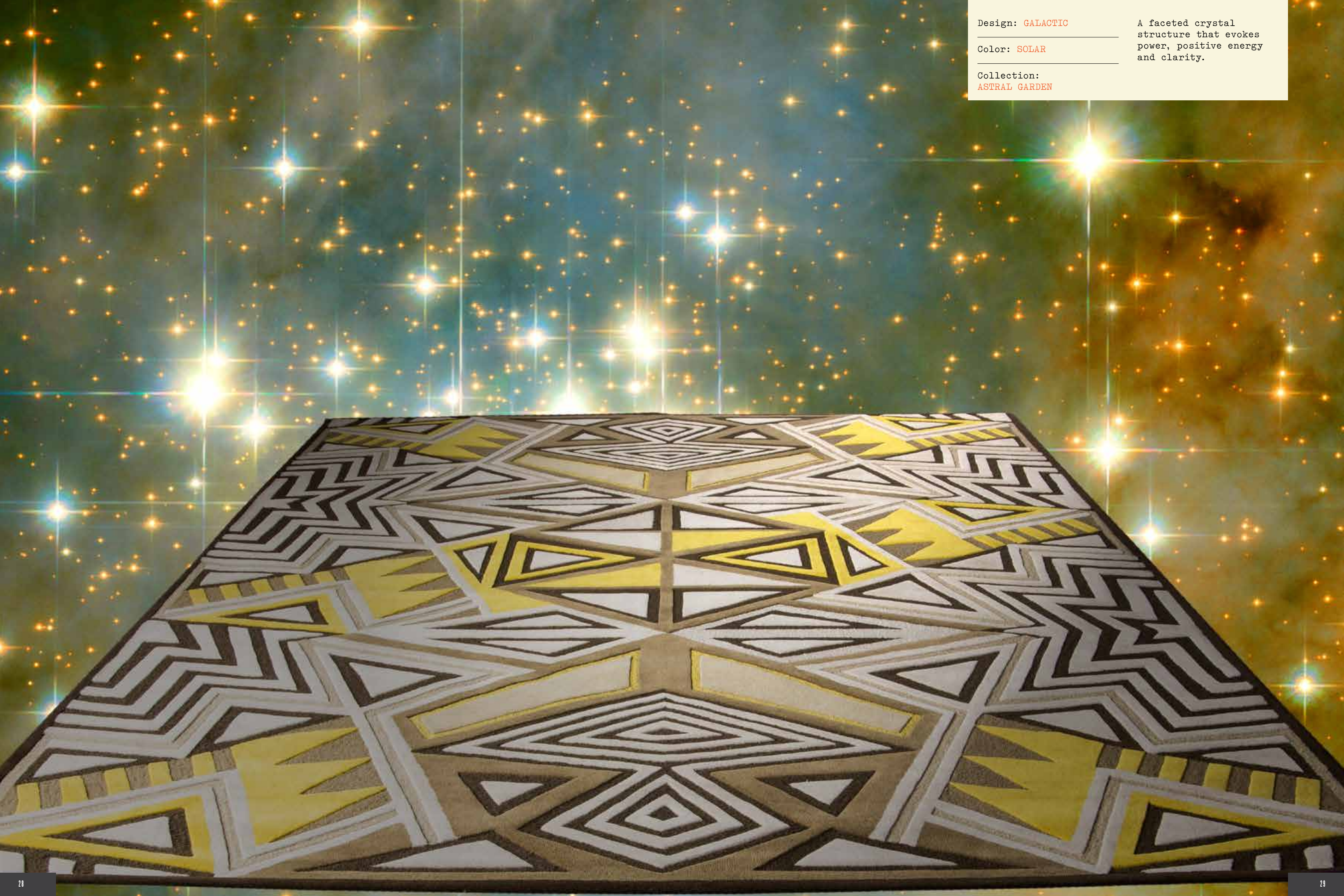


Design: **NEBULA**

Color: **DREAM**

Collection:
ASTRAL GARDEN

Clouds of dust and gases
that exist in outer
space form shapes that
mimic the moons surface.



Design: GALACTIC

Color: SOLAR

Collection:
ASTRAL GARDEN

A faceted crystal
structure that evokes
power, positive energy
and clarity.



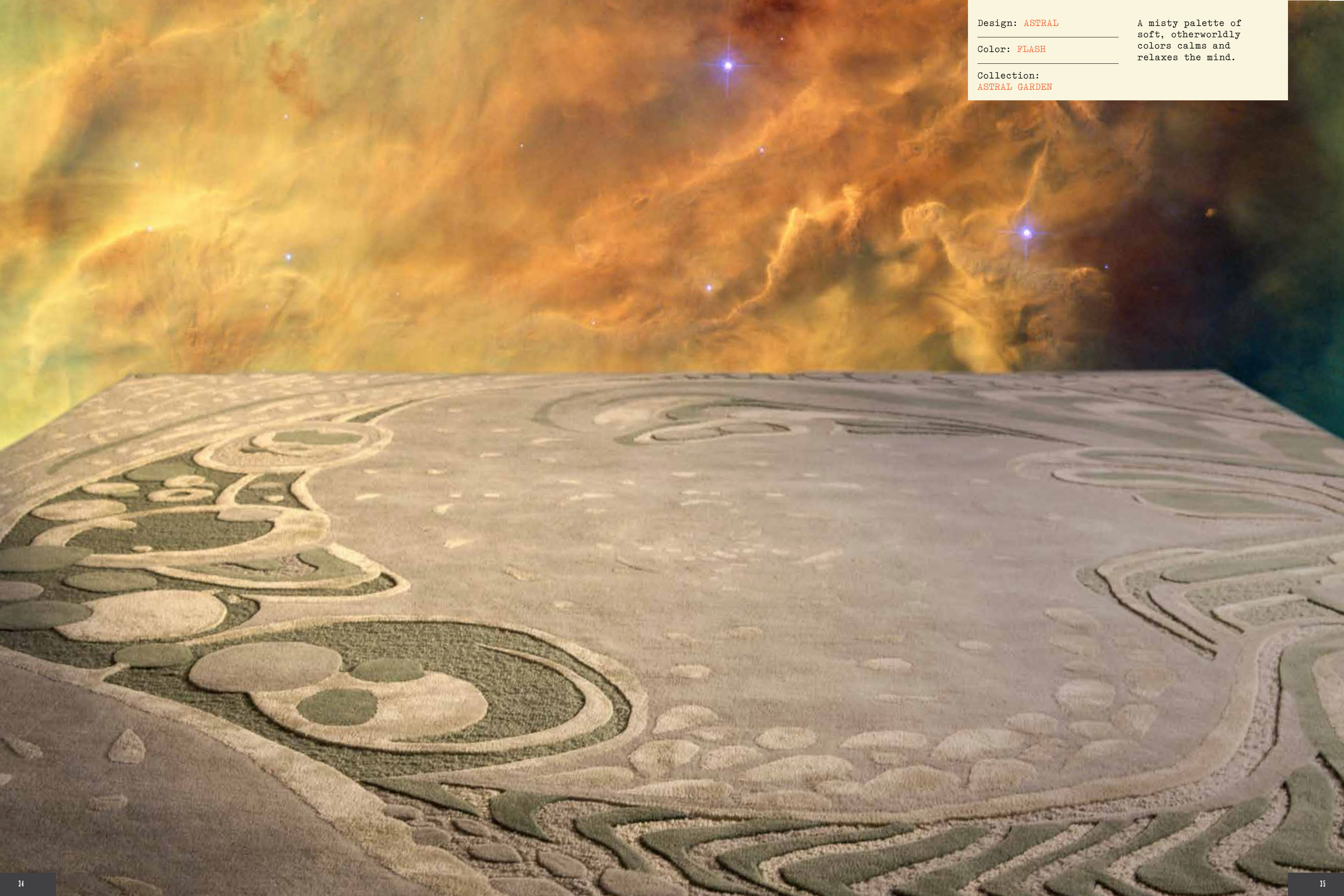
Design: **ASTRAL**

Color: **DARK STAR**

Collection:
ASTRAL GARDEN

A celebration of
stars and the positive,
spiritual energy they
shine down upon us.



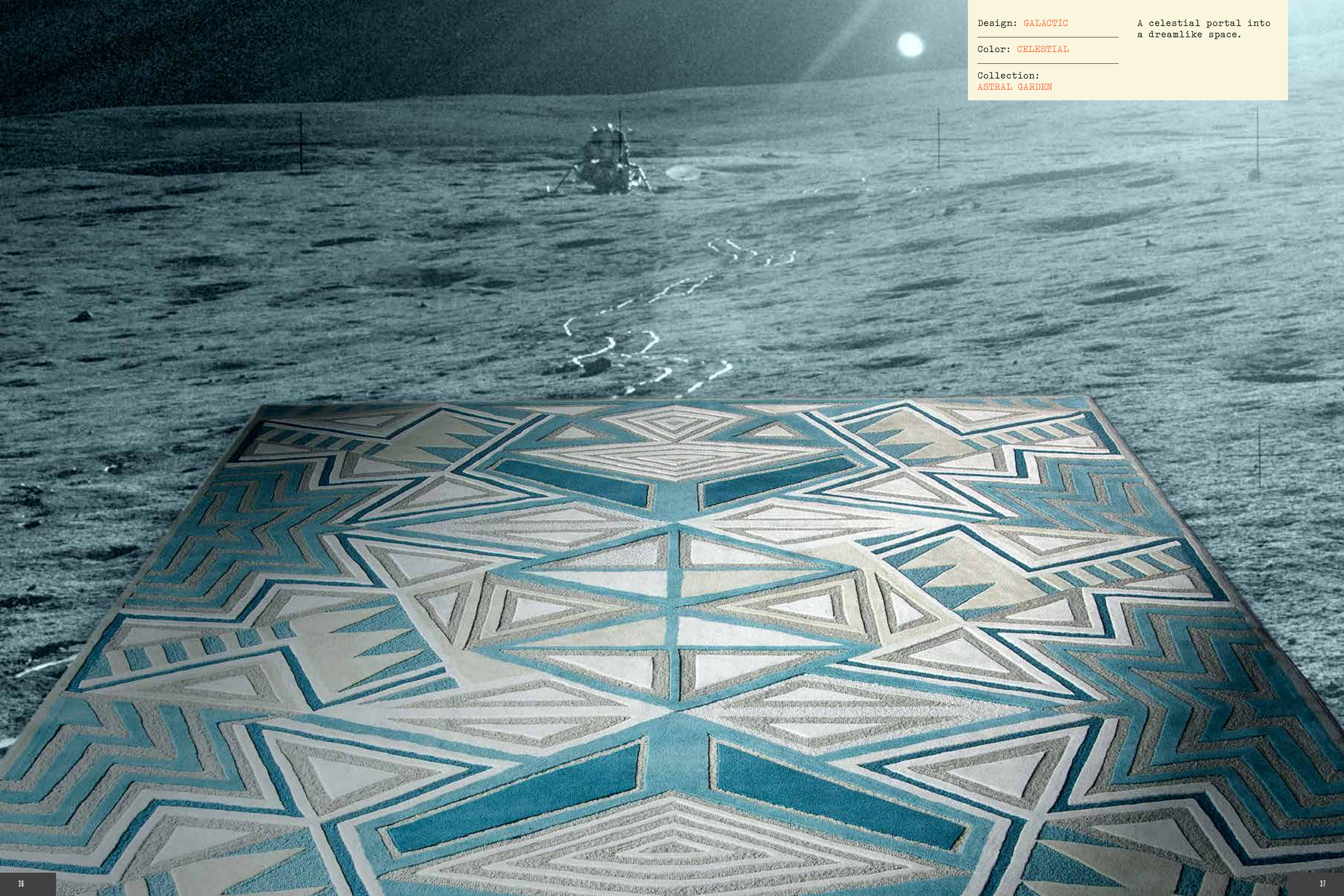


Design: **ASTRAL**

Color: **FLASH**

Collection:
ASTRAL GARDEN

A misty palette of
soft, otherworldly
colors calms and
relaxes the mind.



Design: GALACTIC

Color: CELESTIAL

Collection:
ASTRAL GARDEN

A celestial portal into
a dreamlike space.



Design: LUNAR ORBIT

Color: NIGHT SKY

Collection:
ASTRAL GARDEN

Waves of lunar energy
that create a peaceful,
grounding vibration.



LANDSCAPES

We are in outer space.

The diverse landscapes on earth remind us of other worlds.





















FURNITURE

Sherwood Hamill, my life partner and co-pilot on this journey, approaches life and design in a unique way. He is a navigator, a pilot and a perpetual student who sees the world in multiple dimensions. While I might look at a dramatic sky and see color, form and texture, Sherwood sees the energy of the wind and contemplates the changes in pressure and temperature that created that skyscape.

How things move through the air and water inspire his work. Fins of fish and wings of birds become forms we recognize in his designs.

These pieces sit with visual ease and physical comfort, exuding Sherwood's spirit.

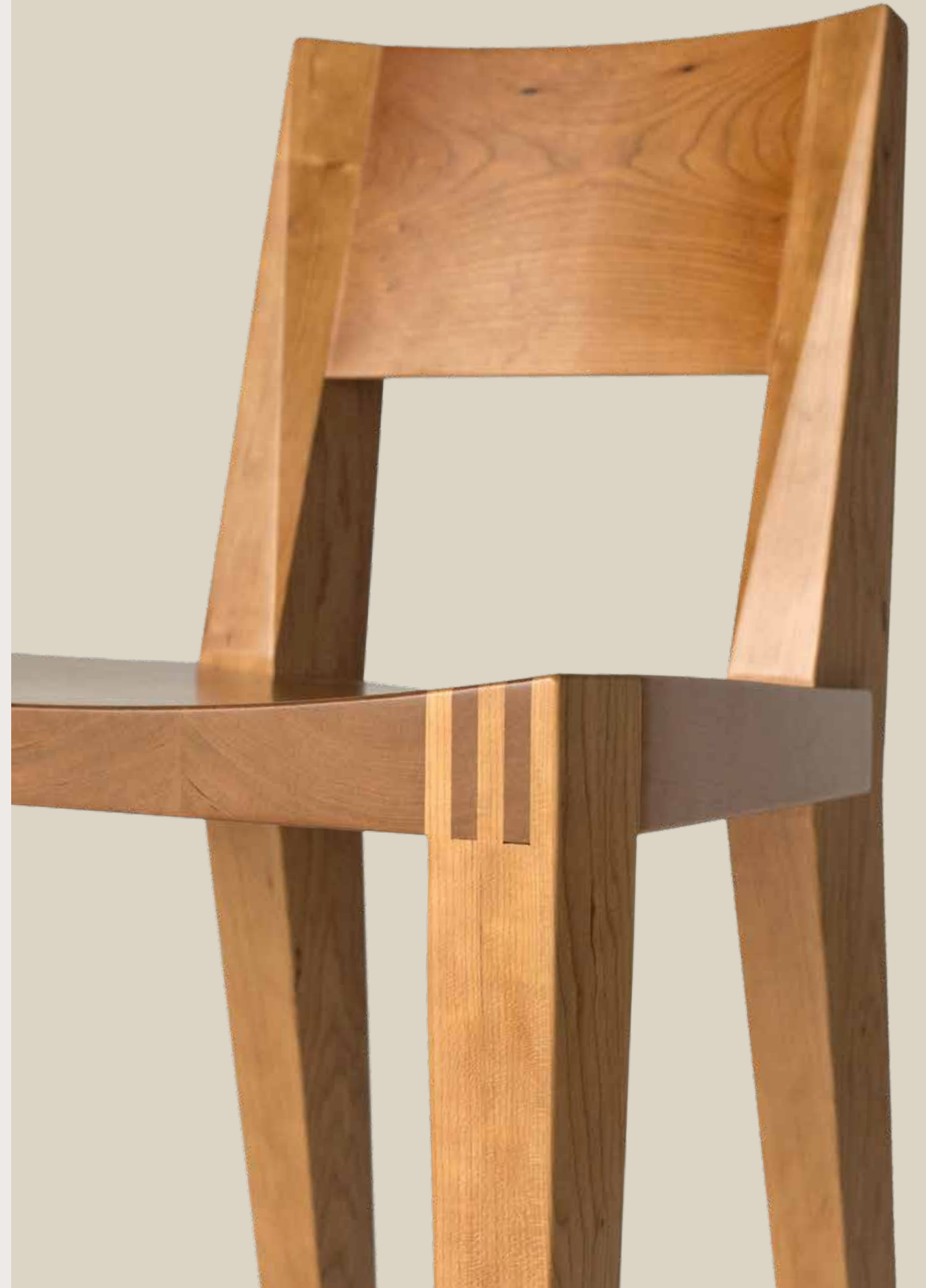
Design: Tula Stool

Construction:
Handcrafted in North
American hardwoods

Collection:
angela adams
by Sherwood Hamill

Note: Pure design
masterfully crafted.







Master furniture
maker Joel Platz in
the furniture shop.
Tula stool in process.



Design:
Moby Coffee Table

Collection:
angela adams
by Sherwood Hamill

Construction:
Handcrafted in North
American hardwoods

Note: Streamlined,
modern elegance.

MOBY



Design: Sea Chest

Construction:
Handcrafted in North
American hardwoods

Collection:
angela adams
by Sherwood Hamill

Note: Timeless
and confident.



SEA CHEST

Design: Sea Bird

Collection:
angela adams
by Sherwood Hamill

Construction:
Handcrafted in maple
with a catalyzed
lacquer finish

Note: Graceful lines of
a soaring bird.



SEA BIRD

V2 CHAIR



Design: V2 Chair

Construction:
Handcrafted in North
American hardwoods

Collection:
angela adams
by Sherwood Hamill

Note: A comforting
dynamic structure.





CERAMICS

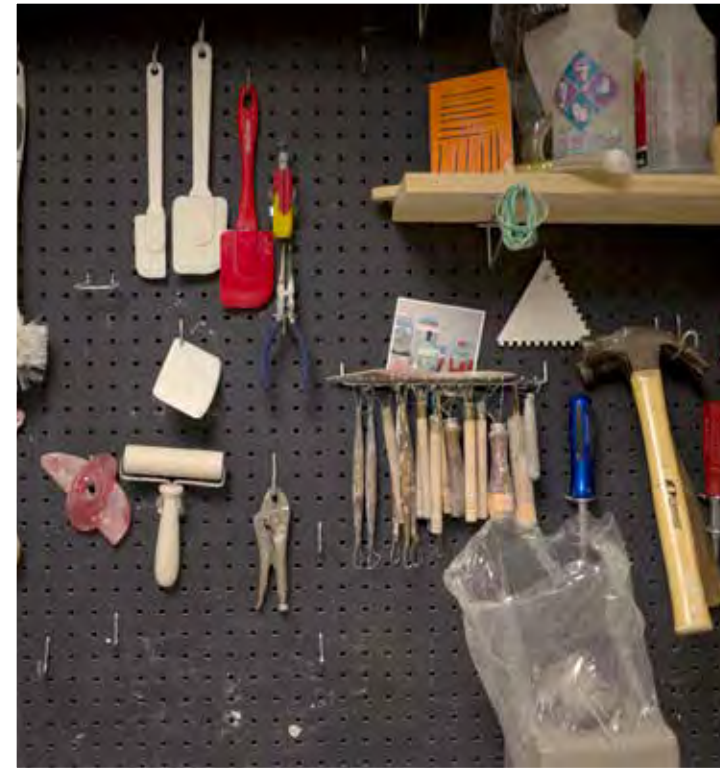
A COLLABORATION WITH C&M CERAMICS

The way we live establishes us on a course toward our goals and dreams.

Thoughtfully curating the objects we live with gives each moment more meaning and fuels the experience with soul.











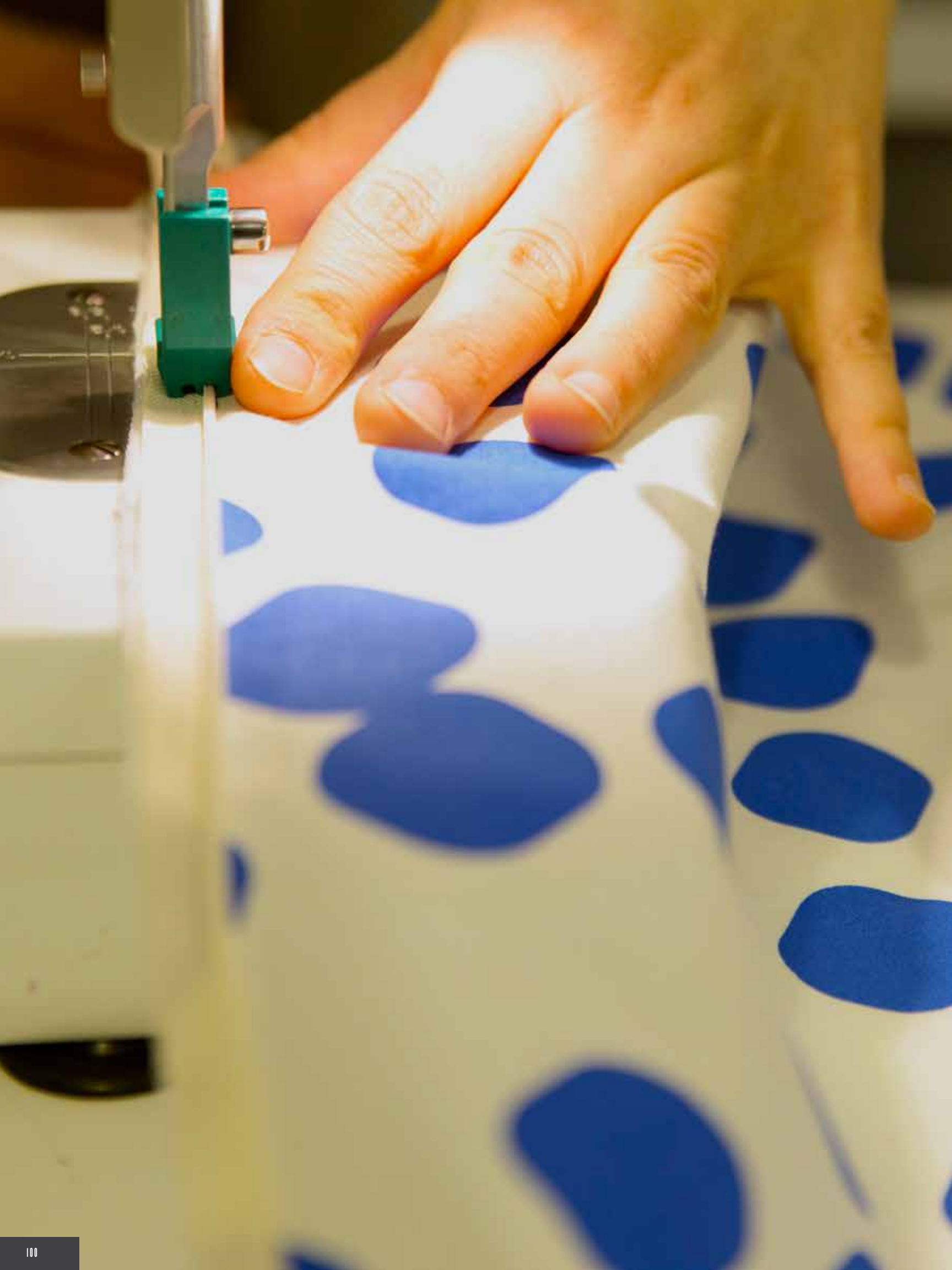


PILLOWS

Small bursts of color brighten up our spaces, exploding with cheerful energy.









WEARABLES

How we live, who we live with and what we do with our time fills our lives with meaning.

Simple moments doing what you love with people you love to be with, enhance the experience and surround us with positive energy.















SATCHELS+POUCHES

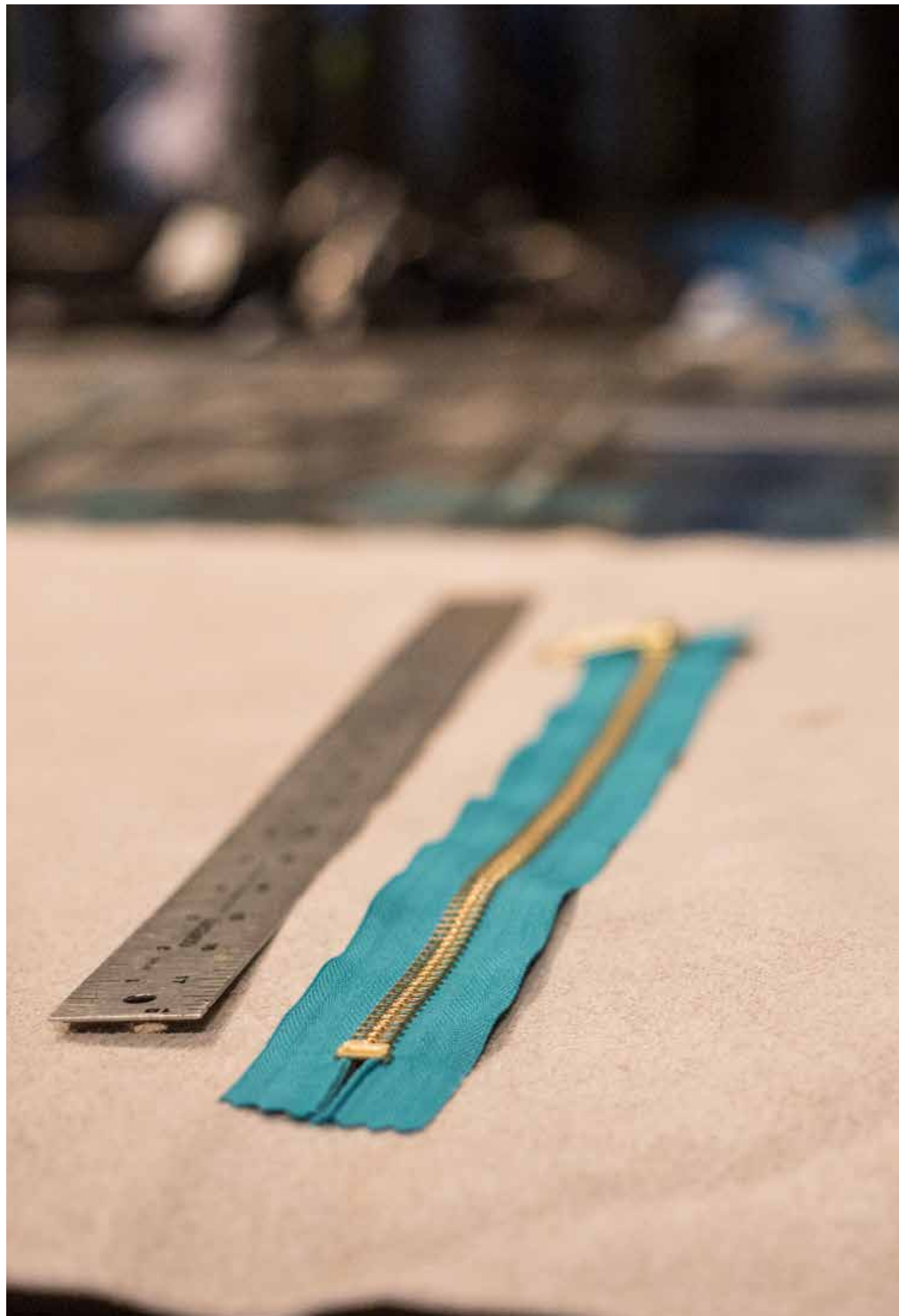
A COLLABORATION WITH GUILD

Daily life requires tools that shepherd us through the journey.









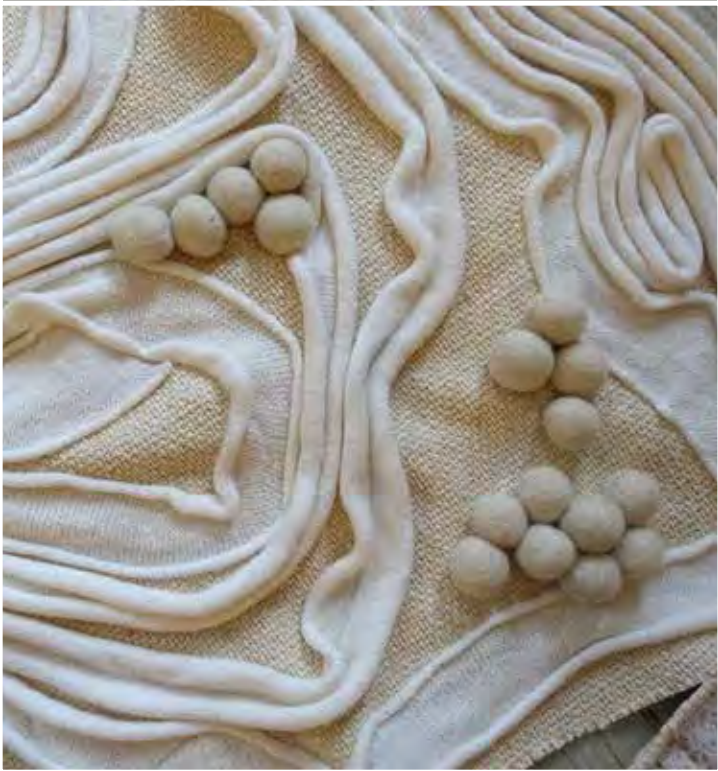
MOONSCAPE TAPESTRY

A COLLABORATION WITH ROSIE ALLARD

Sometimes an idea spills out all over your soul. The texture of the Moon
and the energy of space is an unexplainable inspiration that has no bounds.





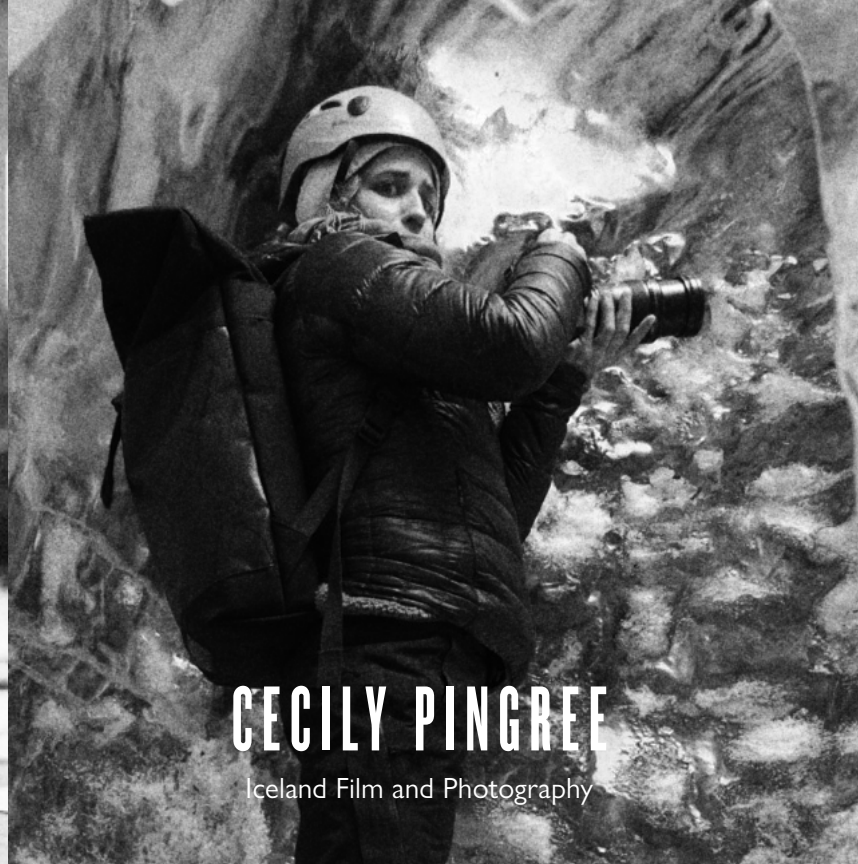






GUILD

Sara Lemieux, Lorenza Lattanzi and Lisa Dorr



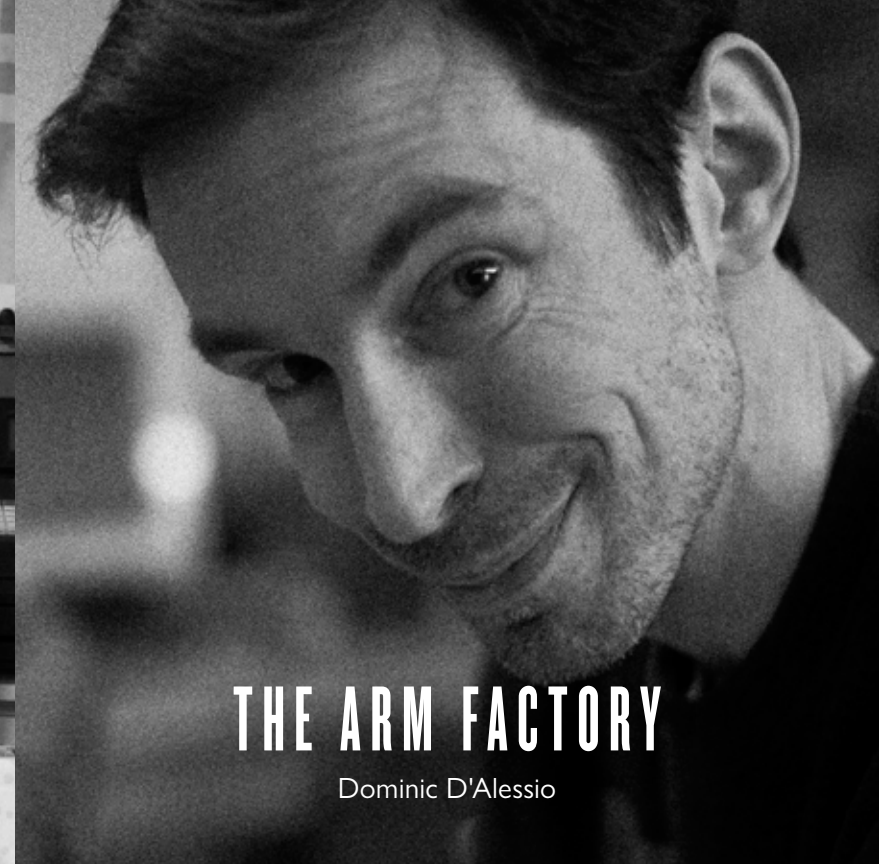
CECILY PINGREE

Iceland Film and Photography



Z FABRICS

Mary Zarate



THE ARM FACTORY

Dominic D'Alessio

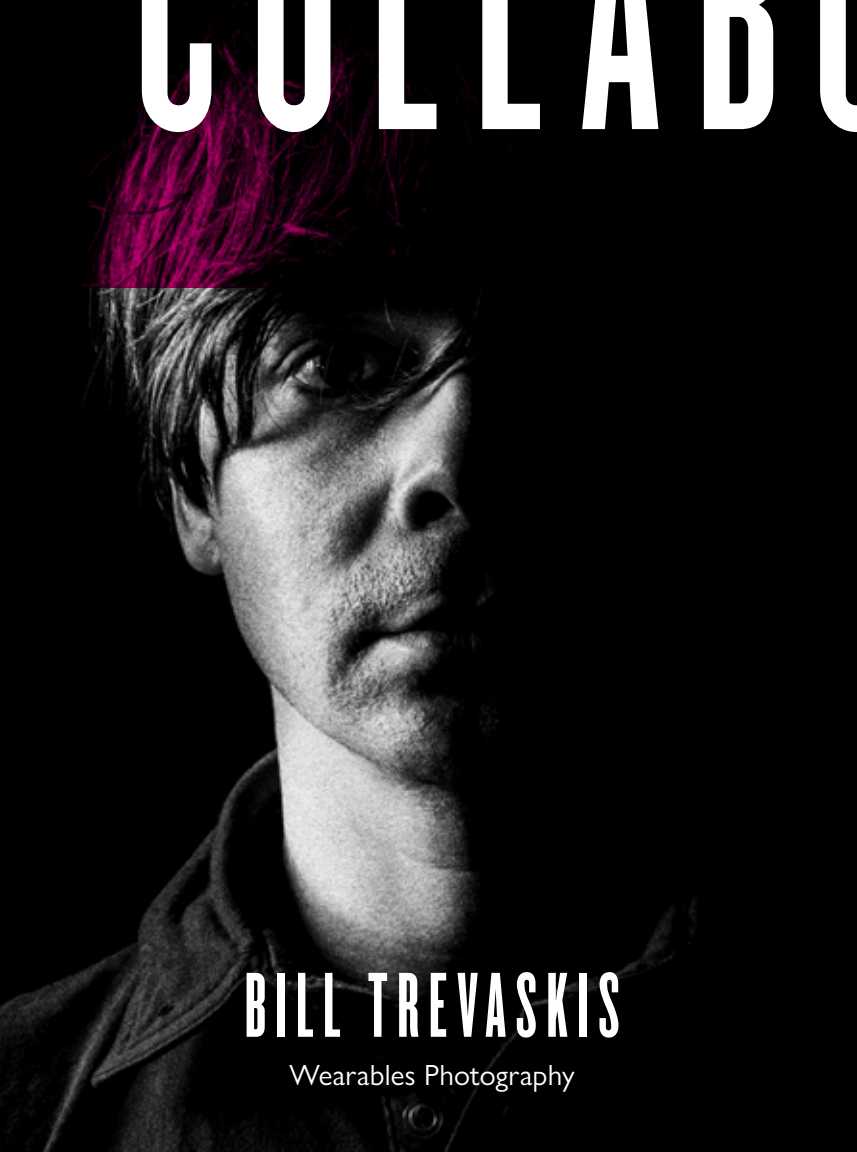
COLLABORATORS

Magical things happen in collaborations. Inspirations become realities.

A shared goal combined with expertise, experimentation and adventure takes us to places we would otherwise never reach on our own.

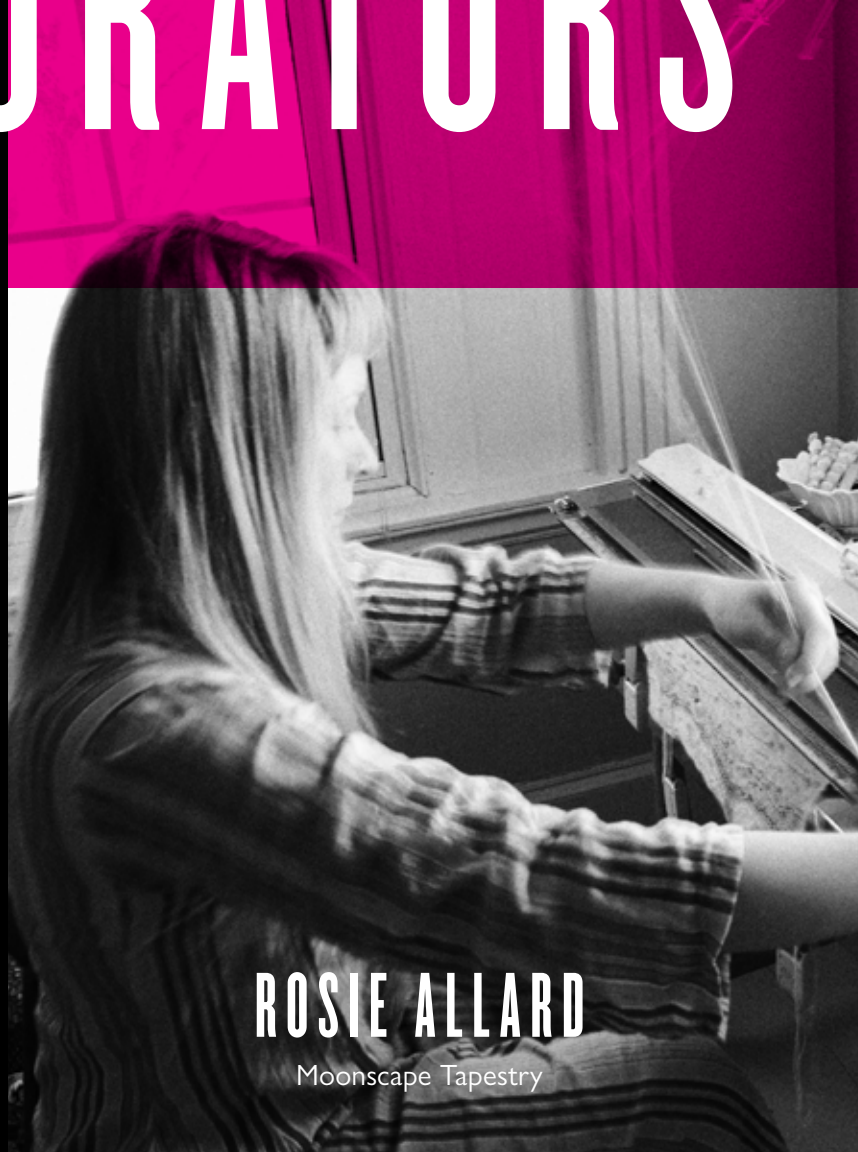
It has been an honor and a privilege to work with such a diverse group of talent on this collection.

Our gratitude reaches way out beyond the moon.



BILL TREVASKIS

Wearables Photography



ROSIE ALLARD

Moonscape Tapestry



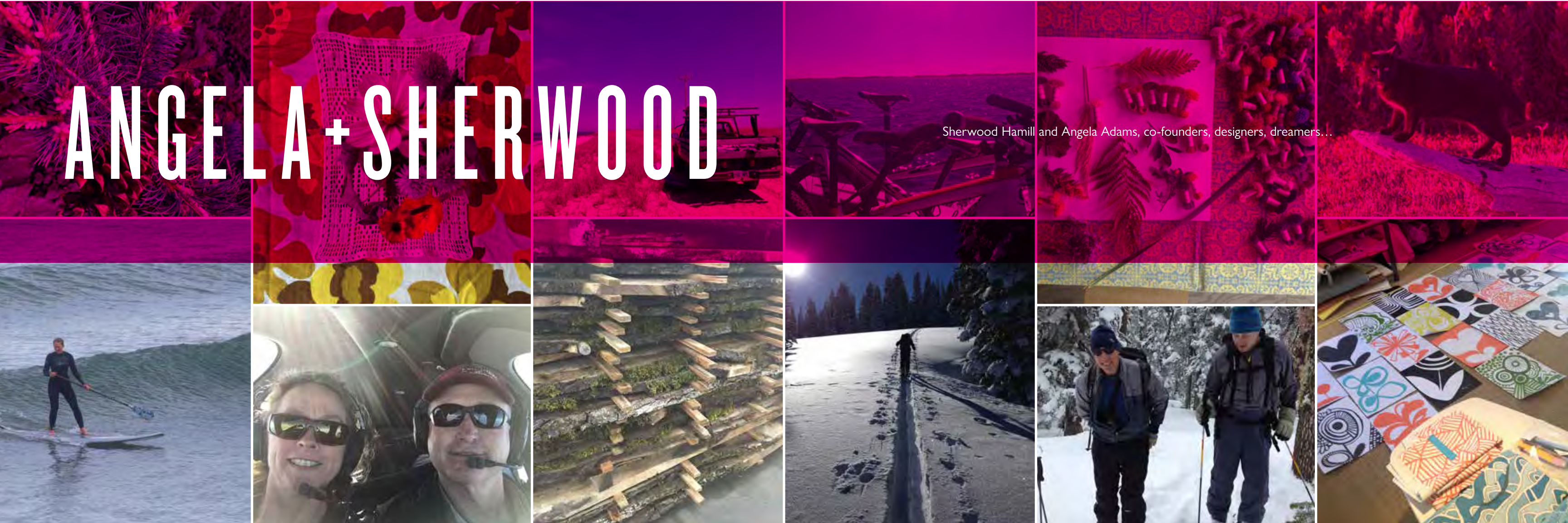
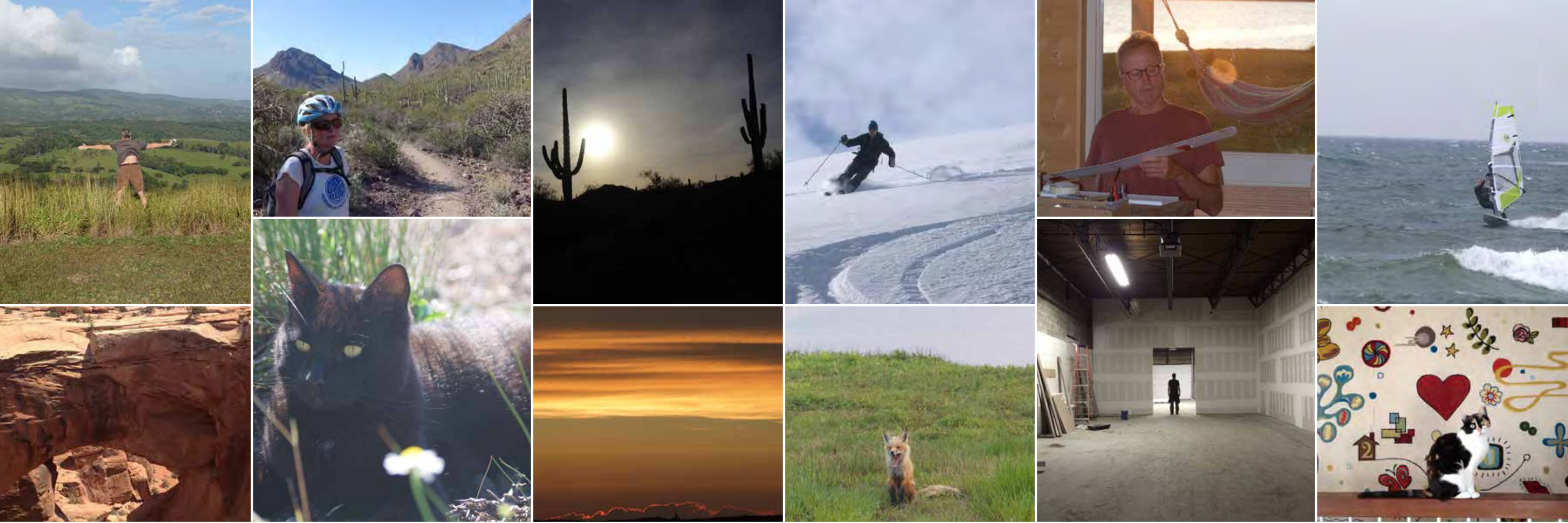
C&M CERAMICS

Christine Caswell and Megan Walsh



INDIGO YANDELL

Astral Guide



Sherwood Hamill and Angela Adams, co-founders, designers, dreamers...

I've heard Sherwood say many times that

“GOOD IDEAS ARE WALKING UP
AND DOWN THE STREET EVERYDAY.
WHAT PEOPLE DO WITH THEM IS
WHAT MAKES THE DIFFERENCE.”

Obsessing over an inspiration can be an exciting adventure.
What makes that dream a reality is our talented team that we
work closely with every day, toward the same goals.

Sarah Gray is our conductor, keeping us all on the same sheet of
music and pointing toward our goals.

Sabrina Volante brought her magic to the product design, digging
deep into each textile and product to ensure the best possible result.

Joel Platz, a master furniture maker, turns a pile of rough cut lumber
into impeccably crafted pieces of furniture.

Dee Dee Germain keeps our entire operation running smoothly
and assures that every thing coming in and out of our building is on
time and of the highest possible quality.

Hannah Jackson, Chrissy Roy, Molly Stackhouse and **Steve Kelly**
are our interfaces with the world and make our dreams a reality by
sharing the inspirations and designs with our customers.

Sarah Perry is the portal that gets our messages out. Without her
skills, our stories and inspirations would not have such a high vibe.

Nic Robichaud brings a multitude of talents to the team, not the
least of which is his commitment to assuring each customer has an
excellent experience when receiving our product.

Betsy McDonald has poured her positive vibes into angela adams for
almost as long as Sherwood and I have. She transports our designs into
spaces all over the planet. Her contribution has been immeasurable.

Ron Harrity turns our simple sketches and ideas into beautiful
photographs, graphics and short films. His talent is woven
throughout each page of this book.

angela adams has been a group effort from day one.

There are many other talented people that have poured their
heart and soul into the angela adams dream over the years and
we will be forever grateful for their contribution. There is a very
high positive vibe at angela adams, which is the result of years of
teamwork and believing in the power of creativity.

NOW, ON TO OUR NEXT ADVENTURE...

